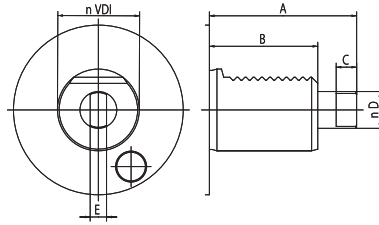
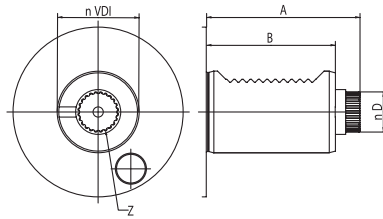


TOOL HOLDERS

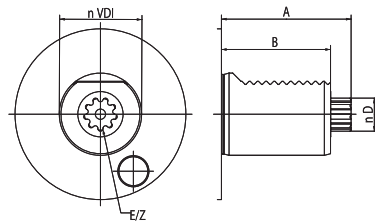
DRIVEN

DIN 1809


VDI	A	B	C	D	E
30	62	45	8	12	6
40	72	53	10	18	8
50	91	78	13	24	13

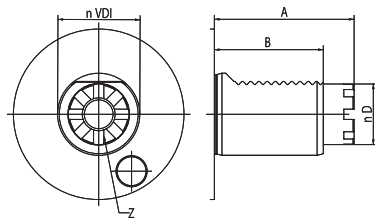
DIN 5480


VDI	A	B	D	Z
30	67	55	15.8	18
40	75	63	19.8	24
50	93	78	23.8	18

DIN 5482


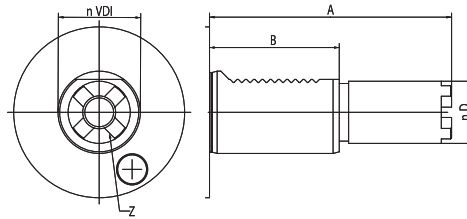
VDI	A	B	D	E	Z
30	55	45	14.5	B15×12	8
40	63	53	16.5	B17×14	9
50	93	78	19.5	B20×17	11

TOEM BARUFFALDI



VDI	A	B	D	Z
30	59	45/53	24	6
40	68	53	32	8
50	84	70	40	8

HAAS



VDI	A	B	D	Z	TIPE
40	104.85	63	30.2	4	1
40	117.55	63	30.2	4	2
40	130.25	63	30.2	4	3



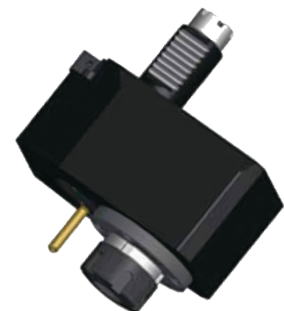
Bright-tools

DRIVEN

DRIVEN TOOLING SYSTEM

DRIVEN 工具系统

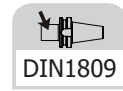
DIN1809 DA DRIVEN HEAD.....	004
轴向钻铣动力刀座	004
DIN1809 DR DRIVEN HEAD.....	005
径向钻铣动力刀座	005
DIN1809 DA DRIVEN HEAD	006
轴向钻铣动力刀座	006
DIN1809 DR DRIVEN HEAD	007
径向钻铣动力刀座	007
DIN1809 DOA DRIVEN HEAD.....	008
轴向偏心钻铣动力刀座	008
DIN1809 DOR DRIVEN HEAD.....	009
径向偏心钻铣动力刀座	009
DIN5480 DA DRIVEN HEAD.....	010
轴向钻铣动力刀座	010
DIN5480 DR DRIVEN HEAD.....	011
径向钻铣动力刀座	011
DIN5480 DOA DRIVEN HEAD.....	012
轴向偏心钻铣动力刀座	012
DIN5480 DOR DRIVEN HEAD	013
径向偏心钻铣动力刀座	013
DIN5482 DA DRIVEN HEAD.....	014
轴向钻铣动力刀座	014
DIN5482 DR DRIVEN HEAD	015
径向钻铣动力刀座	015
DIN5482 DOA DRIVEN HEAD	016
轴向偏心钻铣动力刀座	016
DIN5482 DOR DRIVEN HEAD	017
径向偏心钻铣动力刀座	017
TOEM BARUFFALDI DA DRIVEN HEAD.....	018
轴向钻铣动力刀座	018
TOEM BARUFFALDI DA DRIVEN HEAD.....	019
径向钻铣动力刀座	019
TOEM BARUFFALDI DA DRIVEN HEAD.....	020
轴向偏心钻铣动力刀座	020
DTOEM BARUFFALDI DA DRIVEN HEAD.....	021
径向偏心钻铣动力刀座	021
STEPPED HAASDA DRIVEN HEAD.....	022
轴向钻铣动力刀座	022
STEPPED HAASDA DRIVEN HEAD.....	023
径向钻铣动力刀座	023
STEPPED HAAS DOA DRIVEN HEAD.....	024
轴向偏心钻铣动力刀座	024
STEPPED HAAS DOR DRIVEN HEAD.....	025
径向偏心钻铣动力刀座	025



DRIVEN

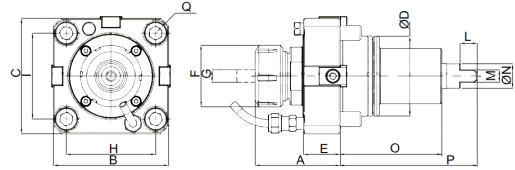
BMT Axial Driven Head, DIN 1809

轴向钻铣动力刀座



RPM
6000

I (rev.)
1:1




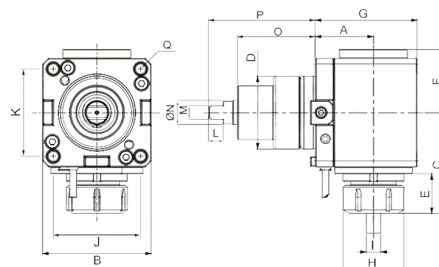
Size	A	B	C	D	E	F	G	H	I	L	M	N	O	P	Q
BMT55-DAER25-56.7	56.7	85	85	55	29	42	ER25	64	64	10	8	17	75	103.5	M10
BMT65-DAER32-68.4	68.5	94	94	65	30	50	ER32	73	70	14	10	20	81	111.5	M12
BMT75-DAER40-78	78	112	112	75	30	63	ER40	90	90	15	14	23	80	110	M12
BMT85-DAER50-108	108	125	125	85	44	78	ER50	100	100	20	16	27.5	96	136	M12

参数未核对

BMT Radial Driven Head, DIN 1809

径向钻铣动力刀座

 DIN1809	RPM 6000	I (rev.) 1:1
--	-------------	-----------------



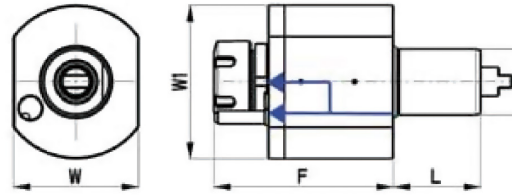
Size	A	B	C	D	E	F	G	H	I	J	K	L	M	N	O	P	Q
BMT55-DRER25-60	60	85	78.5	55	27.5	50	86	42	ER25	64	64	10	8	17	75	103.5	M10
BMT55-DRER25-70	70	85	78.5	55	27.5	50	86	42	ER25	64	64	10	8	17	75	103.5	M10
BMT55-DRER25-85	85	85	78.5	55	27.5	50	86	42	ER25	64	64	10	8	17	75	103.5	M10
BMT65-DRER32-72	72	94	92	65	36	54.5	108	50	ER32	73	70	14	10	20	81	111.5	M12
BMT65-DRER32-100	100	94	92	65	36	54.5	136	50	ER32	73	70	14	10	20	81	111.5	M12
BMT75-DRER40-60	60	112	104	75	41	65	105	63	ER40	90	90	15	14	23	80	110	M12
BMT75-DRER40-90	90	112	104	75	41	65	135	63	ER40	90	90	15	14	23	80	110	M12
BMT75-DRER40-125	125	112	104	75	41	65	170	63	ER40	90	90	15	14	23	80	110	M12
BMT85-DRER40-110	110	125	134.8	85	54.3	75.5	160	78	ER50	100	100	20	16	27.5	96	136	M12

参数未核对

VDI Axial Driven Head, DIN 1809

轴向钻铣动力刀座

DIN1809	RPM 6000	I (rev.) 1:1
---------	-------------	-----------------

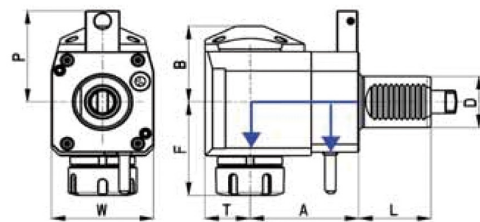


Size	VDI	Collet	F	L	W	W1	Nm	Internal Cooling
VDI30-DAER25-87	30	ER25	87	45	64	68	28	no
VDI30-DAER25K-87	30	ER25	87	45	64	68	28	yes
VDI40-DAER25-105	40	ER25	105	53	80	86	50	no
VDI40-DAER25K-105	40	ER25	105	53	80	86	50	yes
VDI40-DAER32-108	40	ER32	108	53	80	86	50	no
VDI40-DAER32K-108	40	ER32	108	53	80	86	50	yes
VDI40-DAER32-95	40	ER32	95	53	80	86	50	no
VDI40-DAER32K-95	40	ER32	95	53	80	86	50	yes

VDI Radial Driven Head, DIN 1809

径向钻铣动力刀座

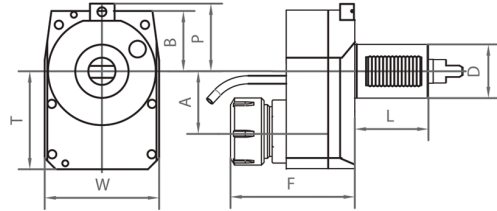
DIN1809	RPM 6000	I (rev.) 1:1
---------	-------------	-----------------



Size	VDI	Collet	A	B	F	L	P	T	W	Nm	Internal Cooling	Direction
VDI30-DRER25-55	30	ER25	55	48	63	45	48	29	64	28	no	right
VDI30-DRER25K-55	30	ER25	55	51	63	45	48	29	64	28	yes	right
VDI40-DRER25-80	40	ER25	80	59	70	53	71	36	75	50	no	right
VDI40-DRER25K-80	40	ER25	80	62	70	53	71	36	75	50	yes	right
VDI40-DRER32-80	40	ER32	80	59	74	53	71	36	75	50	no	right
VDI40-DRER32K-80	40	ER32	80	62	74	53	71	36	75	50	yes	right
VDI40-DRER25-100	40	ER25	100	59	70	53	-	36	75	50	no	left
VDI40-DRER25K-100	40	ER25	100	62	70	53	-	36	75	50	yes	left
VDI40-DRER32-100	40	ER32	100	59	74	53	-	36	75	50	no	left
VDI40-DRER32K-100	40	ER32	100	62	74	53	-	36	75	50	yes	left

VDI Axial Driven Head, Offset, DIN 1809
轴向偏心钻铣动力刀座

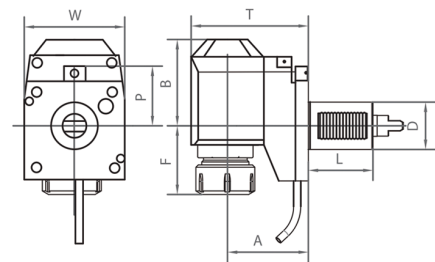
	RPM	I (rev.)
DIN1809	12000	1:2



Size	VDI	Collet	A	B	F	L	P	T	W	Nm	Cooling
VDI30-DOAER25-50-106	30	ER25	50	40	106	45	48	90	78	14	EXT

VDI Radial Driven Head, Offset, DIN 1809
径向偏心钻铣动力刀座

	I (rev.)
DIN1809	1:1



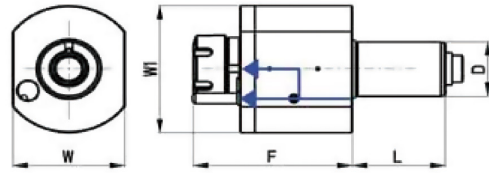
Size	VDI	Collet	A	B	F	L	P	T	W	Nm	RPM	Cooling
VDI30-DORER25-75-40	30	ER25	75	71	40	45	48	101	64	28	6000	no
VDI30-DORER25K-75-40	30	ER25	75	74	40	45	48	101	64	28	6000	yes
VDI40-DORER25-120-37	40	ER25	120	92	37	53	71	120	75	60	4000	no
VDI40-DORER25K-120-37	40	ER25	120	95	37	53	71	120	75	60	4000	yes
VDI40-DORER32-120-41	40	ER32	120	92	41	53	71	120	75	60	4000	no
VDI40-DORER32K-120-41	40	ER32	120	95	41	53	71	120	75	60	4000	yes

DRIVEN

VDI Axial Driven Head, DIN 5480

轴向钻铣动力刀座

DIN5480	RPM 6000	I (rev.) 1:1
---------	-------------	-----------------

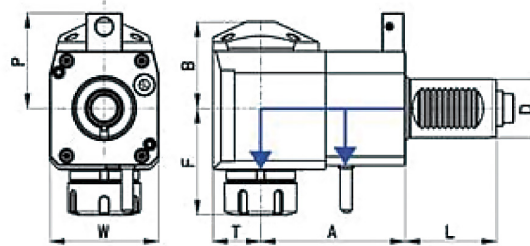


Size	VDI	Collet	F	L	W	W1	Nm	Internal Cooling
VDI30-DAER25-87	30	ER25	87	55	62	69	28	no
VDI30-DAER25K-87	30	ER25	87	55	62	69	28	yes
VDI40-DAER25-105	40	ER25	105	63	76	94	50	no
VDI40-DAER25K-105	40	ER25	105	63	76	94	50	yes
VDI40-DAER32-108	40	ER32	108	63	76	94	50	no
VDI40-DAER32K-108	40	ER32	108	63	76	94	50	yes

VDI Radial Driven Head, DIN 5480

径向钻铣动力刀座

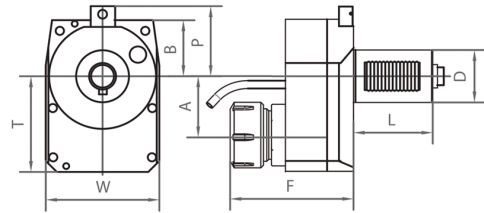
DIN5480	RPM 6000	I (rev.) 1:1
---------	-------------	-----------------



Size	VDI	Collet	A	B	F	L	P	T	W	Nm	Internal Cooling	Direction
VDI30-DRER25-55	30	ER25	55	48	63	55	56	26	64	28	no	right
VDI30-DRER25K-55	30	ER25	55	51	63	55	56	26	64	28	yes	right
VDI30-DRER25-85	30	ER25	85	48	63	55	56	26	64	28	no	right
VDI30-DRER25K-85	30	ER25	85	51	63	55	56	26	64	28	yes	right
VDI30-DRER25-100	30	ER25	100	48	63	55	56	29	64	28	no	right
VDI30-DRER25K-100	30	ER25	100	51	63	55	56	29	64	28	yes	right
VDI40-DRER25-80	40	ER25	80	59	70	63	65	33	75	50	no	right
VDI40-DRER25K-80	40	ER25	80	62	70	63	65	33	75	50	yes	right
VDI40-DRER25-100	40	ER25	100	59	70	63	65	33	75	50	no	right
VDI40-DRER25K-100	40	ER25	100	62	70	63	65	33	75	50	yes	right
VDI40-DRER32-80	40	ER32	80	59	74	63	65	33	75	50	no	right
VDI40-DRER32K-80	40	ER32	80	62	74	63	65	33	75	50	yes	right
VDI40-DRER32-100	40	ER32	100	59	74	63	65	33	75	50	no	right
VDI40-DRER32K-100	40	ER32	100	62	74	63	65	33	75	50	yes	right

VDI Axial Driven Head, Offset, DIN 5480
轴向偏心钻铣动力刀座

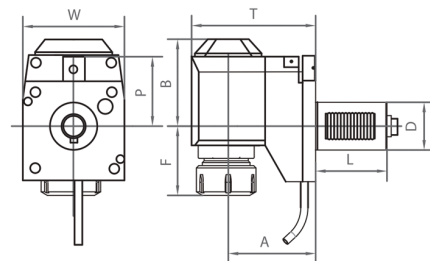
	RPM	I (rev.)
DIN5480	12000	1:2



Size	VDI	Collet	A	B	F	L	P	T	W	Nm	Cooling
VDI30-DOAER25-50-102	30	ER25	50	47	102	55	56	90	78	14	EXT

VDI Radial Driven Head, Offset, DIN 5480
径向偏心钻铣动力刀座

	RPM	I (rev.)
DIN5480	6000	1:1



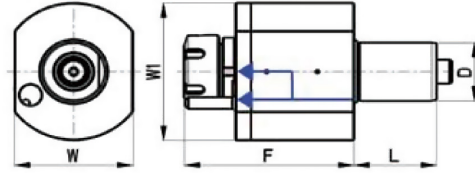
Size	VDI	Collet	A	B	F	L	P	T	W	Nm	Cooling
VDI30-DORER25-75-39.8	30	ER25	75	71	39.8	55	56	101	64	28	EXT
VDI30-DORER25K-75-39.8	30	ER25	75	73.5	39.8	55	56	101	64	28	EXT+INT
VDI40-DORER25-120-36.6	40	ER25	120	92.2	36.6	63	65	153	75	50	EXT
VDI40-DORER25K-120-36.6	40	ER25	120	95.2	36.6	63	65	153	75	50	EXT+INT
VDI40-DORER32-120-40.6	40	ER32	120	92.2	40.6	63	65	153	75	50	EXT
VDI40-DORER32K-120-40.6	40	ER32	120	95.2	40.6	63	65	153	75	50	EXT+INT

DRIVEN

VDI Axial Driven Head, DIN 5482

轴向钻铣动力刀座

DIN5482	RPM 6000	I (rev.) 1:1
---------	-------------	-----------------

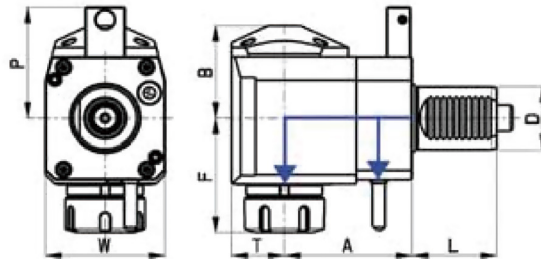


Size	VDI	Collet	F	L	W	W1	Nm	Internal Cooling
VDI30-DAER25-87	30	ER25	87	45	62	69	28	no
VDI30-DAER25K-87	30	ER25	87	45	62	69	28	yes
VDI40-DAER25-105	40	ER25	105	53	76	94	50	no
VDI40-DAER25K-105	40	ER25	105	53	76	94	50	yes
VDI40-DAER32-108	40	ER32	108	53	76	94	50	no
VDI40-DAER32K-108	40	ER32	108	53	76	94	50	yes

VDI Radial Driven Head, DIN 5482

径向钻铣动力刀座

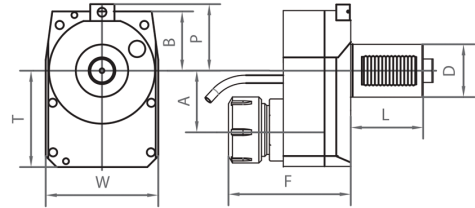
DIN5482	RPM 6000	I (rev.) 1:1
---------	-------------	-----------------



Size	VDI	Collet	A	B	F	L	P	T	W	Nm	Internal Cooling	Direction
VDI30-DRER25-55	30	ER25	55	48	63	45	48	26	64	28	no	right
VDI30-DRER25K-55	30	ER25	55	51	63	45	48	26	64	28	yes	right
VDI40-DRER25-80	40	ER25	80	59	70	53	71	33	75	50	no	right
VDI40-DRER25K-80	40	ER25	80	62	70	53	71	33	75	50	yes	right
VDI40-DRER32-80	40	ER32	80	59	74	53	71	33	75	50	no	right
VDI40-DRER32K-80	40	ER32	80	62	74	53	71	33	75	50	yes	right

VDI Axial Driven Head, Offset, DIN 5482
轴向偏心钻铣动力刀座

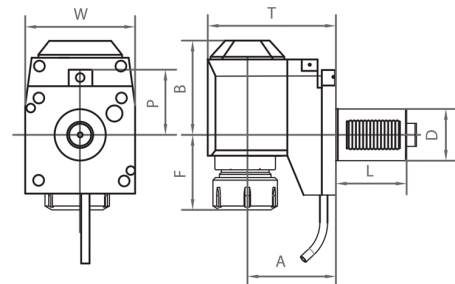
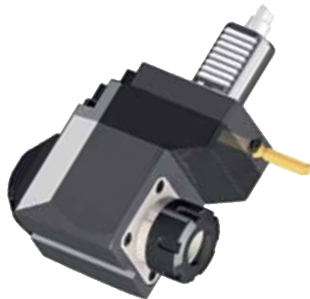
	RPM	I (rev.)
DIN5482	12000	1:2



Size	VDI	Collet	A	B	F	L	P	T	W	Nm	Cooling
VDI30-DOAER25-50-102	30	ER25	50	40	102	45	48	90	78	14	EXT

VDI Radial Driven Head, Offset, DIN 5482
径向偏心钻铣动力刀座

	I (rev.)
DIN 5482	1:1

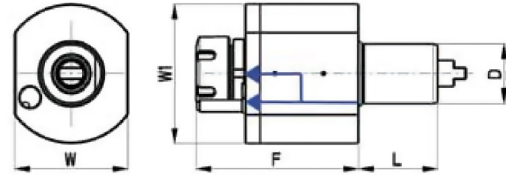


Size	VDI	Collet	A	B	F	L	P	T	W	Nm	RPM	Cooling
VDI30-DORER25-75-40	30	ER25	75	71	40	45	48	101	64	28	6000	no
VDI30-DORER25K-75-40	30	ER25	75	74	40	45	48	101	64	28	6000	yes
VDI40-DORER25-120-37	40	ER25	120	92	37	53	71	125.5	75	60	4000	no
VDI40-DORER25K-120-37	40	ER25	120	95	37	53	71	125.5	75	60	4000	yes
VDI40-DORER32-120-41	40	ER32	120	92	41	53	71	125.5	75	60	4000	no
VDI40-DORER32K-120-41	40	ER32	120	95	41	53	71	125.5	75	60	4000	yes

DRIVEN

VDI Axial Driven Head, TOEM 轴向钻铣动力刀座

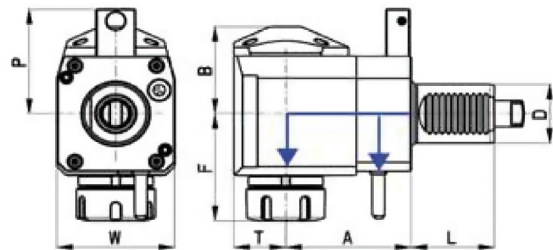
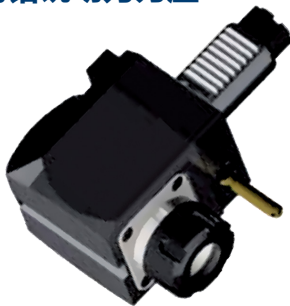
	RPM	I (rev.)
TOEM BARUFFALDI	6000	1:1



Size	VDI	Collet	F	L	W	W1	Nm	Internal Cooling	Z
VDI30-DAER25-87	30	ER25	87	45	64	68	28	no	6
VDI30-DAER25K-87	30	ER25	87	45	64	68	28	yes	6
VDI40-DAER25-105	40	ER25	105	53	80	86	50	no	8
VDI40-DAER25K-105	40	ER25	105	53	80	86	50	yes	8
VDI40-DAER32-108	40	ER32	108	53	80	86	50	no	8
VDI40-DAER32K-108	40	ER32	108	53	80	86	50	yes	8

VDI Radial Driven Head, TOEM 径向钻铣动力刀座

	RPM	I (rev.)
TOEM BARUFFALDI	6000	1:1

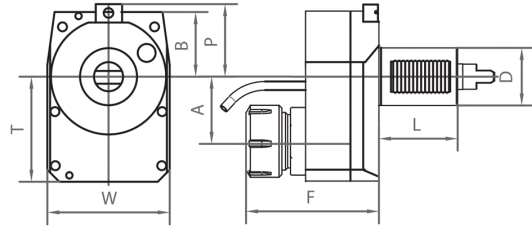


Size	VDI	Collet	A	B	F	L	P	T	W	Nm	Internal Cooling	Direction	Z
VDI30-DRER25-55	30	ER25	55	48	63	45	48	29	64	28	no	right	6
VDI30-DRER25K-55	30	ER25	55	51	63	45	48	29	64	28	yes	right	6
VDI40-DRER25-80	40	ER25	80	59	70	53	71	36	75	50	no	right	8
VDI40-DRER25K-80	40	ER25	80	62	70	53	71	36	75	50	yes	right	8
VDI40-DRER32-80	40	ER32	80	59	74	53	71	36	75	50	no	right	8
VDI40-DRER32K-80	40	ER32	80	62	74	53	71	36	75	50	yes	right	8

VDI Axial Driven Head, Offset, TOEM
轴向偏心钻铣动力刀座



	RPM	I (rev.)
TOEM BARUFFALDI	12000	1:2

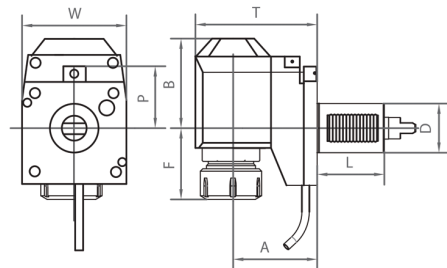


Size	VDI	Collet	A	B	F	L	P	T	W	Nm	Cooling	Z
VDI30-DOAER25-50-106	30	ER25	50	40	106	45	48	90	78	14	EXT	6

VDI Radial Driven Head, Offset, TOEM
径向偏心钻铣动力刀座

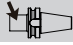


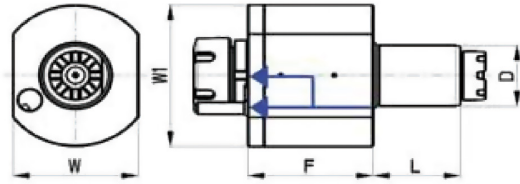
	RPM	I (rev.)
TOEM BARUFFALDI	6000	



Size	VDI	Collet	A	B	F	L	P	T	W	Nm	Cooling	Z
VDI30-DORER25-75-40	30	ER25	75	71	40	45	48	101	64	28	no	
VDI30-DORER25K-75-40	30	ER25	75	74	40	45	48	101	64	28	yes	
VDI40-DORER25-120-37	40	ER25	120	92	37	53	71	120	75	60	no	
VDI40-DORER25K-120-37	40	ER25	120	95	37	53	71	120	75	60	yes	6
VDI40-DORER32-120-41	40	ER32	120	92	41	53	71	120	75	60	no	6
VDI40-DORER32K-120-41	40	ER32	120	95	41	53	71	120	75	60	yes	-
												-
												-
												-
												-

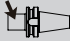
VDI Axial Driven Head, STEPPED HAAS
轴向钻铣动力刀座

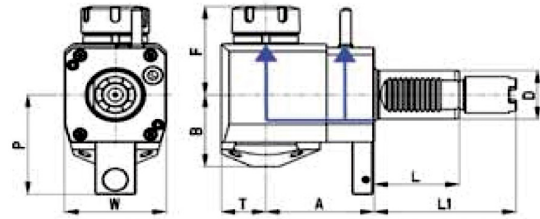
	RPM	I (rev.)
STEPPED HAAS	6000	1:1



Size	VDI	Collet	F	L	L1	W	W1	Nm	Internal Cooling
VDI40-DAER25-105	40	ER25	105	63	104.85	76	94	50	no
VDI40-DAER25K-105	40	ER25	105	63	104.85	76	94	50	yes
VDI40-DAER32-108	40	ER32	108	63	104.85	76	94	50	no
VDI40-DAER32K-108	40	ER32	108	63	104.85	76	94	50	yes
VDI40-DAER25-105L	40	ER25	105	63	117.55	76	94	50	no
VDI40-DAER25K-105L	40	ER25	105	63	117.55	76	94	50	yes
VDI40-DAER32-108L	40	ER32	108	63	117.55	76	94	50	no
VDI40-DAER32K-108L	40	ER32	108	63	117.55	76	94	50	yes
VDI40-DAER25-105EL	40	ER25	105	63	130.25	76	94	50	no
VDI40-DAER25K-105EL	40	ER25	105	63	130.25	76	94	50	yes
VDI40-DAER32-108EL	40	ER32	108	63	130.25	76	94	50	no
VDI40-DAER32K-108EL	40	ER32	108	63	130.25	76	94	50	yes

VDI Radial Driven Head, STEPPED HAAS
径向钻铣动力刀座

 STEPPED HAAS	RPM 6000	I (rev.) 1:1
---	-------------	-----------------

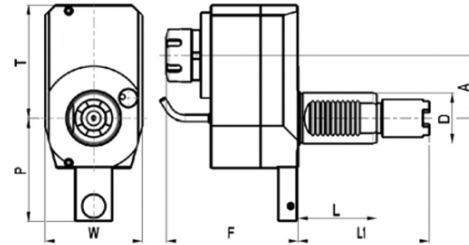
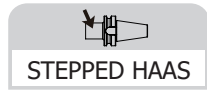


Size	VDI	Collet	A	B	F	L	L1	P	T	W	Nm	Internal Cooling	Direction
VDI40-DRER25-69	40	ER25	69	59	70	63	104.85	82	36	75	60	no	left
VDI40-DRER25K-69	40	ER25	69	62	70	63	104.85	82	36	75	50	yes	left
VDI40-DRER32-69	40	ER32	69	59	74	63	104.85	82	36	75	50	no	left
VDI40-DRER32K-69	40	ER32	69	62	74	63	104.85	82	36	75	50	yes	left
VDI40-DRER25-69L	40	ER25	69	59	70	63	117.55	82	36	75	50	no	left
VDI40-DRER25K-69L	40	ER25	69	62	70	63	117.55	82	36	75	50	yes	left
VDI40-DRER32-69L	40	ER32	69	59	74	63	117.55	82	36	75	50	no	left
VDI40-DRER32K-69L	40	ER32	69	62	74	63	117.55	82	36	75	50	yes	left
VDI40-DRER25-69EL	40	ER32	69	59	70	63	130.25	82	36	75	50	no	left
VDI40-DRER25K-69EL	40	ER25	69	62	70	63	130.25	82	36	75	50	yes	left
VDI40-DRER32-69EL	40	ER25	69	59	74	63	130.25	82	36	75	50	no	left
VDI40-DRER32K-69EL	40	ER32	69	62	74	63	130.25	82	36	75	50	yes	left
VDI40-DRER25-80	40	ER25	80	59	70	63	104.85	82	33	75	50	no	left
VDI40-DRER25K-80	40	ER25	80	62	70	63	104.85	82	33	75	50	yes	left
VDI40-DRER32-80	40	ER32	80	59	74	63	104.85	82	33	75	50	no	left
VDI40-DRER32K-80	40	ER32	80	62	74	63	104.85	82	33	75	50	yes	left
VDI40-DRER25-80L	40	ER25	80	59	70	63	117.55	82	33	75	50	no	left
VDI40-DRER25K-80L	40	ER25	80	62	70	63	117.55	82	33	75	50	yes	left
VDI40-DRER32-80L	40	ER32	80	59	74	63	117.55	82	33	75	50	no	left
VDI40-DRER32K-80L	40	ER32	80	62	74	63	117.55	82	33	75	50	yes	left
VDI40-DRER25-80EL	40	ER25	80	59	70	63	130.25	82	33	75	50	no	left
VDI40-DRER25K-80EL	40	ER25	80	62	70	63	130.25	82	33	75	50	yes	left
VDI40-DRER32-80EL	40	ER32	80	59	74	63	130.25	82	33	75	50	no	left
VDI40-DRER32K-80EL	40	ER32	80	62	74	63	130.25	82	33	75	50	yes	left

DRIVEN

VDI Axial Driven Head, Offset, STEPPED HAAS

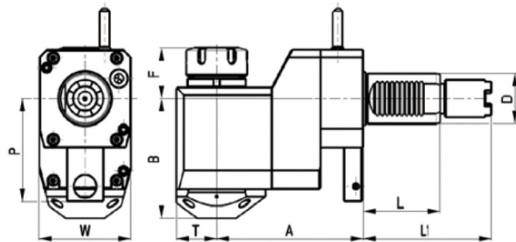
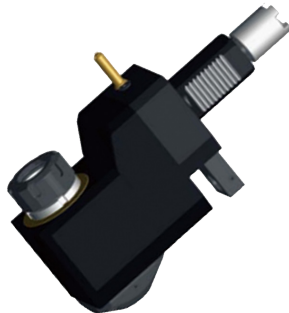
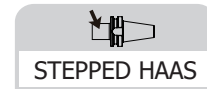
轴向偏心钻铣动力刀座



Size	VDI	Collet	A	F	L	L1	P	T	W	Cooling	Direction
VDI40-DOAER25-50-63	40	ER25	50	106	63	140.85	82	90	78	no	left
VDI40-DOAER25K-50-63	40	ER25	50	106	63	140.85	82	90	78	yes	left
VDI40-DOAER25-50-63L	40	ER25	50	106	63	117.55	82	90	78	no	left
VDI40-DOAER25K-50-63L	40	ER25	50	106	63	117.55	82	90	78	yes	left
VDI40-DOAER25-50-63EL	40	ER25	50	106	63	130.25	82	90	78	no	left
VDI40-DOAER25K-50-63EL	40	ER25	50	106	63	130.25	82	90	78	yes	left

VDI Radial Driven Head, Offset, STEPPED HAAS

径向偏心钻铣动力刀座



Size	VDI	Collet	A	B	F	L	L1	P	T	W	Cooling	Direction
VDI40-DORER25-120-37	40	ER25	120	92	37	63	104.85	82	33	75	no	left
VDI40-DORER25K-120-37	40	ER25	120	95	37	63	104.85	82	33	75	yes	left
VDI40-DORER32-120-37	40	ER32	120	92	41	63	104.85	82	33	75	no	left
VDI40-DORER32K-120-37	40	ER32	120	95	41	63	104.85	82	33	75	yes	left
VDI40-DORER25-120-37L	40	ER25	120	92	37	63	117.55	82	33	75	no	left
VDI40-DORER25K-120-37L	40	ER25	120	95	37	63	117.55	82	33	75	yes	left
VDI40-DORER32-120-37L	40	ER32	120	92	41	63	117.55	82	33	75	no	left
VDI40-DORER32K-120-37L	40	ER32	120	95	41	63	117.55	82	33	75	yes	left
VDI40-DORER25-120-37EL	40	ER25	120	92	37	63	130.25	82	33	75	no	left
VDI40-DORER25K-120-37EL	40	ER25	120	95	37	63	130.25	82	33	75	yes	left
VDI40-DORER32-120-37EL	40	ER32	120	92	41	63	130.25	82	33	75	no	left
VDI40-DORER32K-120-37EL	40	ER32	120	95	41	63	130.25	82	33	75	yes	left

