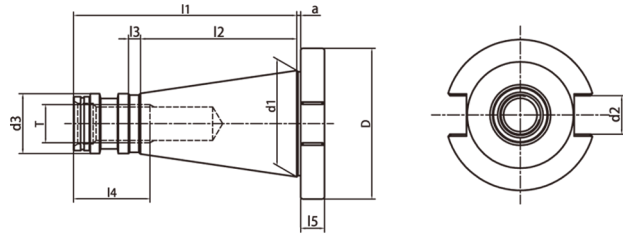
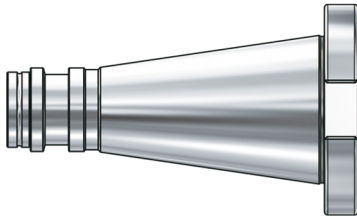


NT

TOOL HOLDERS

NT Taper Standard

NT 锥柄标准



Size	D	d1	d2	d3	a	l1	l2	l3	l4	l5	T
NT30	50	31.75	16.1	17.11	1.6	68.4	48.4	3	24	8	M12
NT40	63	44.45	16.1	25	1.6	93.4	65.4	5	32	10	M16
NT50	97.5	69.85	25.7	39.29	3.2	126.8	101.8	8	47	12	M24

Taper standard: DIN 2080

Material: Alloyed case hardened steel

Surface Treatment: Blackening and Bright

Taper tolerance: <AT3

Hardness: HRC 58-62

Carbon depth: 0.8±0.2mm

Surface Roughness: Ra<0.005mm

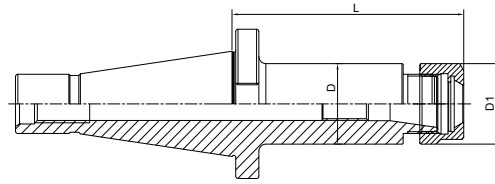
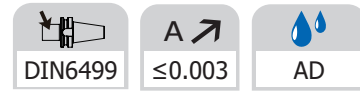
NT TOOLING SYSTEM

NT 工具系统

ER Collet Chuck.....	E.04
ER弹簧夹头刀柄	E.04
Power Milling Chuck.....	E.06
强力铣刀柄	E.06
OZ Collet Chuck.....	E.07
OZ夹头刀柄	E.07
Face Mill Holder	E.08
面铣刀柄	E.08
Combi Shell Mill Holder.....	E.09
混合插入式铣刀柄	E.09
End Mill Holder.....	E.10
侧固刀柄	E.10
Morse Taper Adapter.....	E.11
带扁尾莫氏刀柄	E.11
Morse Taper Adapter	E.12
带螺纹孔莫氏刀柄	E.12
Tool Holder Adatper Sleeve	E.13
转换刀柄.....	E.13
Drill Chuck Adapter.....	E.14
钻接杆	E.14
APU Drill Chuck Holder	E.15
APU钻夹头刀柄.....	E.15
Quick Change Tapping Chuck	E.16
弹性快换攻丝刀柄	E.15



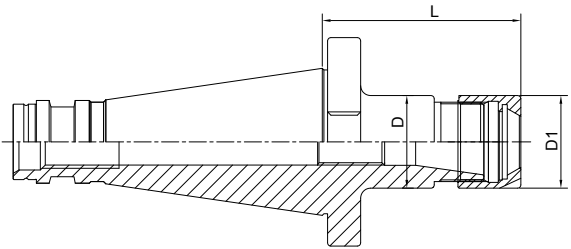
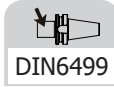
NT

ER Collet Chuck
ER 弹簧夹头刀柄


Size	D	D1	L	Capacity
NT30-ER16A-50	28	28	50	1-10
NT30-ER20A-50	34	34	50	1-13
NT30-ER25-50	42	42	50	2-16
NT30-ER32-50	40	50	50	2-20
NT30-ER40-80	50	63	80	4-26
NT40-ER16-50(OTT)	28	28	50	1-10
NT40-ER20-50(OTT)	34	34	50	1-13
NT40-ER25-50(OTT)	42	42	50	1-13
NT40-ER32-50(OTT)	50	50	50	3-20
NT40-ER40-80(OTT)	50	63	80	4-26
NT50-ER25-60(OTT)	42	42	60	1-13
NT50-ER32-70(OTT)	50	50	70	1-20
NT50-ER40-80(OTT)	63	63	70	2-26
NT50-ER50-90(OTT)	70	78	90	6-34

NT

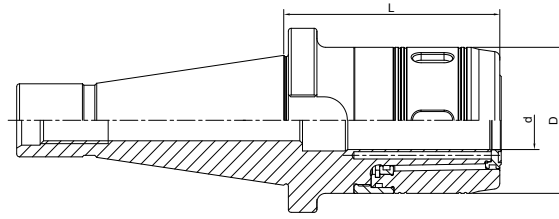

ER Collet Chuck with Mini Nut
ER 弹簧夹头刀柄



Size	D	D1	L	Capacity
NT30-ER16M-70	22	22	70	1-10
NT30-ER20M-70	28	28	70	1-13
NT30-ER25M-70	35	35	70	2-16
NT40-ER16M-60(OTT)	22	22	60	1-10
NT40-ER20M-60(OTT)	28	28	60	1-13
NT40-ER25M-60(OTT)	35	35	60	2-16

NT

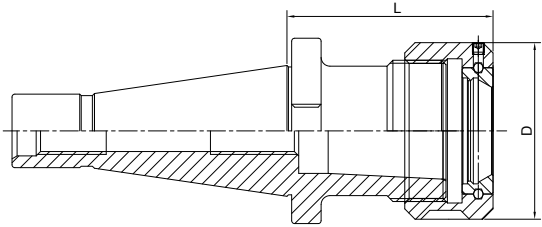
Power Milling Chuck 强力铣刀柄



Size	d	D	L	Capacity	M
NT40-HC25-105(OTT)	25	59	105	3-20; 25	M16
NT40-HC32-105(OTT)	32	72	105	3-25; 32	M16
NT50-HC32-110(OTT)	32	72	110	3-25; 32	M24
NT50-HC42-120(OTT)	42	99	120	3-32; 42	M24

NT


OZ Collet Chuck
OZ 夹头刀柄

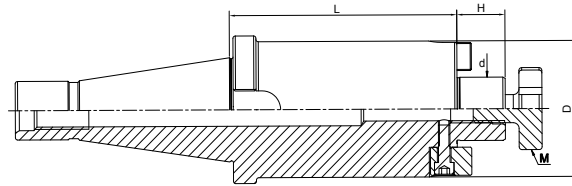
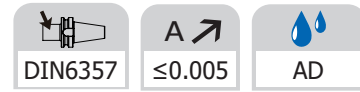


Size	D	L	Capacity
NT30-OZ16-50	43	50	2-16
NT30-OZ25-70	60	70	3-25
NT40-OZ16-70(OTT)	43	70	2-16
NT40-OZ25-70(OTT)	60	70	3-25
NT40-OZ32-80(OTT)	72	80	6-32
NT50-OZ25-70(OTT)	60	70	3-25
NT50-OZ32-80(OTT)	72	80	6-32

NT



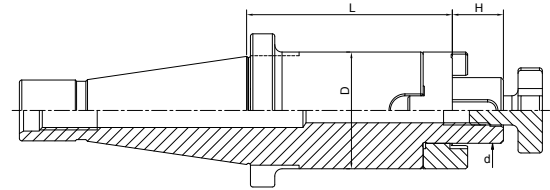
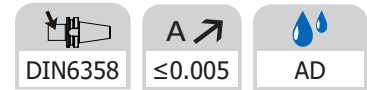
Face Mill Holder 面铣刀柄



Size	d	D	L	H	M
NT30-FMB16-30	16	38	30	17	M8
NT30-FMB22-30	22	48	30	19	M10
NT30-FMB27-45	27	58	45	21	M12
NT30-FMB32-50	32	78	50	24	M16
NT40-FMB16-30(OTT)	16	38	30	17	M8
NT40-FMB22-30(OTT)	22	48	30	19	M10
NT40-FMB27-30(OTT)	27	58	30	21	M12
NT40-FMB32-30(OTT)	32	78	30	24	M16
NT40-FMB40-30(OTT)	40	88	30	27	M20
NT50-FMB16-30(OTT)	16	38	30	17	M8
NT50-FMB22-35(OTT)	22	48	35	19	M10
NT50-FMB27-35(OTT)	27	58	35	21	M12
NT50-FMB32-40(OTT)	32	78	40	24	M16
NT50-FMB40-40(OTT)	40	88	40	27	M20

NT


Combi Shell Mill Holder
混合插入式铣刀柄

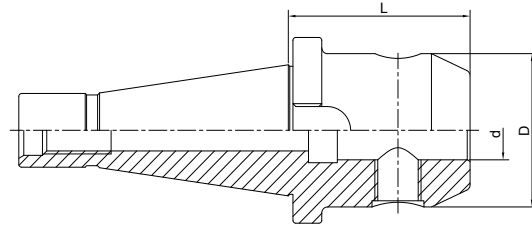
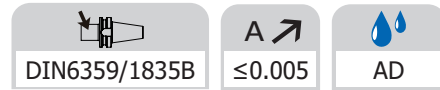


Size	d	D	L	L1
NT30-SEMC16-35	16	32	35	17
NT30-SEMC22-35	22	40	35	19
NT30-SEMC27-35	27	48	35	21
NT30-SEMC32-50	32	58	50	24
NT40-SEMC16-52(OTT)	16	32	52	17
NT40-SEMC22-52(OTT)	22	40	52	19
NT40-SEMC27-52(OTT)	27	48	52	21
NT40-SEMC32-52(OTT)	32	58	52	24
NT40-SEMC40-52(OTT)	40	70	52	27
NT50-SEMC16-55(OTT)	16	32	55	17
NT50-SEMC22-55(OTT)	22	40	55	19
NT50-SEMC27-55(OTT)	27	48	55	21
NT50-SEMC32-55(OTT)	32	58	55	24
NT50-SEMC40-55(OTT)	40	70	55	27

NT



End Mill Holder Weldon 侧固刀柄



Size	d	D	L
NT30-SLA06-40	6	25	40
NT30-SLA08-40	8	28	40
NT30-SLA10-40	10	35	40
NT30-SLA12-40	12	42	40
NT30-SLA16-50	16	48	50
NT30-SLA18-50	18	50	50
NT30-SLA20-63	20	52	63
NT40-SLA06-50(OTT)	6	25	50
NT40-SLA08-50(OTT)	8	28	50
NT40-SLA10-50(OTT)	10	35	50
NT40-SLA12-50(OTT)	12	42	50
NT40-SLA14-50(OTT)	14	44	50
NT40-SLA16-63(OTT)	16	48	63
NT40-SLA18-63(OTT)	18	50	63
NT40-SLA20-63(OTT)	20	52	63
NT40-SLA25-80(OTT)	25	65	80
NT40-SLA32-80(OTT)	32	72	80
NT40-SLA40-90(OTT)	40	80	90
NT50-SLA06-63(OTT)	6	25	63
NT50-SLA08-63(OTT)	8	28	63
NT50-SLA10-63(OTT)	10	35	63
NT50-SLA12-63(OTT)	12	42	63
NT50-SLA14-63(OTT)	14	44	63
NT50-SLA16-63(OTT)	16	48	63
NT50-SLA18-63(OTT)	18	50	63
NT50-SLA20-63(OTT)	20	52	63
NT50-SLA25-80(OTT)	25	65	80
NT50-SLA32-80(OTT)	32	72	80
NT50-SLA40-90(OTT)	40	80	90



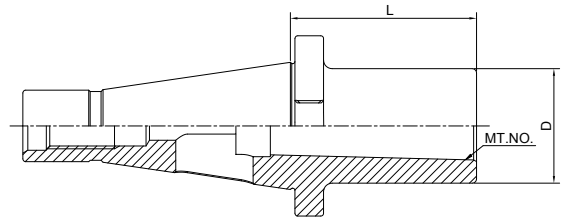
Morse Taper Adapter with Tang
带扁尾莫氏刀柄

DIN6383

A ↗

≤0.005

AD



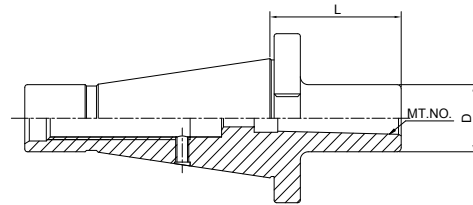
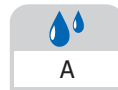
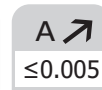
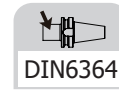
Size	MT.No.	L	D
NT30-MTA1-50	1	50	25
NT30-MTA2-50	2	50	32
NT30-MTA3-75	3	75	40
NT40-MTA1-50(OTT)	1	50	25
NT40-MTA2-50(OTT)	2	50	32
NT40-MTA3-65(OTT)	3	65	40
NT40-MTA4-95(OTT)	4	95	48
NT50-MTA1-45(OTT)	1	45	25
NT50-MTA2-60(OTT)	2	60	32
NT50-MTA3-65(OTT)	3	65	40
NT50-MTA4-70(OTT)	4	70	48
NT50-MTA5-105(OTT)	5	105	63

NT



Morse Taper Adapter with Drawbar

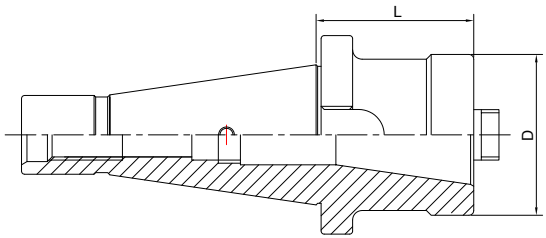
带螺纹孔莫氏刀柄



Size	MT.No.	L	D
NT30-MTB1-45	1	45	25
NT30-MTB2-60	2	60	32
NT30-MTB3-70	3	70	40
NT40-MTB1-50(OTT)	1	50	25
NT40-MTB2-50(OTT)	2	50	32
NT40-MTB3-65(OTT)	3	65	40
NT40-MTB4-95(OTT)	4	95	48
NT50-MTB1-60(OTT)	1	60	25
NT50-MTB2-60(OTT)	2	60	32
NT50-MTB3-65(OTT)	3	65	40
NT50-MTB4-65(OTT)	4	65	48
NT50-MTB5-120(OTT)	5	120	63



Tool Holder Adatper Sleeve
转换刀柄

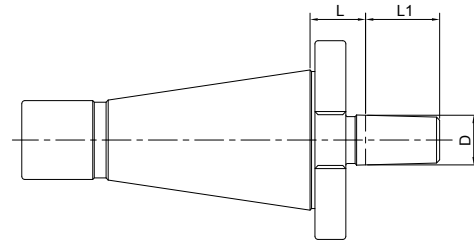
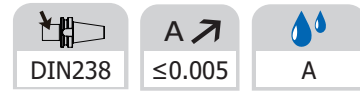


Size	D	L
NT40-NT30-50(OTT)	51	50
NT40-NT40-100(OTT)	63	100
NT50-NT40-50(OTT)	70	50
NT50-NT50-125(OTT)	97	125

NT



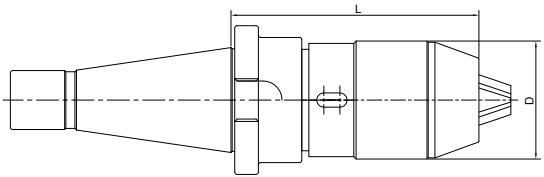
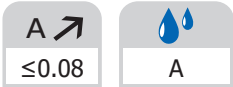
Drill Chuck Adapter 钻接杆



Size	D	L	L1
NT30-B12	B12	15	18.5
NT30-B16	B16	17	24
NT40-B12	B12	18	18.5
NT40-B16	B16	18	24
NT40-B18	B18	18	32
NT50-B16	B16	20	24
NT50-B18	B18	20	32



APU Drill Chuck Holder
APU 钻夹头刀柄



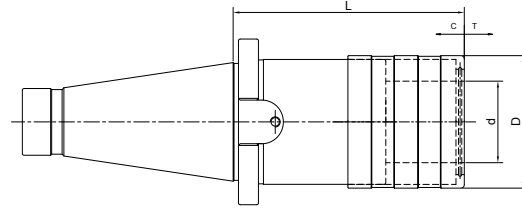
Size	D	L		Capacity
NT30-APU08-80	38	80	90	1-8
NT30-APU13-100	48	100	110	1-13
NT40-APU08-85(OTT)	38	85	95	1-8
NT40-APU13-110(OTT)	48	110	120	1-13
NT40-APU16-105(OTT)	53	105	115	3-16
NT50-APU08-95(OTT)	38	90	105	1-8
NT50-APU13-100(OTT)	48	100	110	1-13
NT50-APU16-110(OTT)	53	110	120	3-16

NT



Quick Change Tapping Chuck with Length Compensation

弹性快换攻丝刀柄



Size	Collet Size	d	D	L	T	C
NT30-TC312-55	1	19	36	55	7.5	7.5
NT30-TC820-86	2	31	53	86	12.5	12.5
NT40-TC312-55(OTT)	1	19	36	55	7.5	7.5
NT40-TC820-86(OTT)	2	31	53	86	12.5	12.5
NT40-TC1433-132(OTT)	3	48	78	132	22	22
NT50-TC312-62(OTT)	1	19	36	62	7.5	7.5
NT50-TC820-90(OTT)	2	31	53	90	12.5	12.5
NT50-TC1433-117(OTT)	3	48	78	117	22	22



