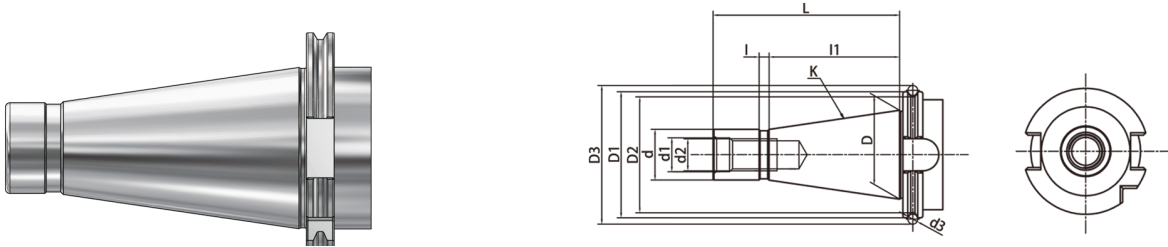


GOST

TOOL HOLDERS

GOST Taper Standard GOST 锥柄标准



Size	D	D1	D2	D3	D4	d	d1	d2	d3	L	I	I1
SK30	31.75	50	46	55.070	44	17.4	13	M12	4	68.4	3	48.4
SK40	44.45	63	58	69.340	55	25.3	17	M16	5	93.4	5	65.4
SK50	69.85	100	94	107.610	85	39.6	25	M24	6	126.8	8	101.8

Taper standard: GOST 25827-93

Material: Alloyed case hardened steel

Surface Treatment: Blackening

Taper tolerance: <AT3

Hardness: HRC 58-62

Carbon depth: 0.8±0.2mm

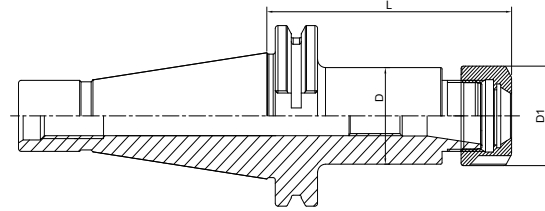
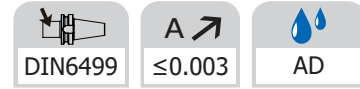
Surface Roughness: Ra<0.005mm

GOST TOOLING SYSTEM GOST 工具系统

ER Collet Chuck	F.04
ER弹簧夹头刀柄	F.04
Power Milling Chuck.....	F.05
强力铣刀柄.....	F.05
Face Mill Holder	F.06
面铣刀柄	F.06
Combi Shell Mill Holder	F.07
混合插入式铣刀柄.....	F.07
End Mill Holder.....	F.08
侧固刀柄.....	F.08
Morse Taper Adapter.....	F.09
带扁尾莫氏刀柄.....	F.09
Morse Taper Adapter.....	F.10
带螺纹孔莫氏刀柄.....	F.10
APU Drill Chuck Holder	F.11
APU钻夹头刀柄.....	F.11
Quick Change Tapping Chuck.....	F.12
弹性快换攻丝刀柄.....	F.12



GOST

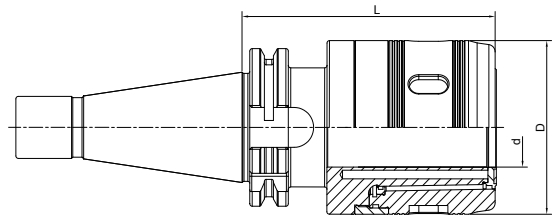
ER Collet Chuck
ER 弹簧夹头刀柄


Size	D	D1	L	Capacity
SK40-ER16-70 GOST	28	32	70	1-10
SK40-ER25-70 GOST	42	42	70	2-16
SK40-ER32-70 GOST	40	50	70	2-20
SK40-ER40-80 GOST	50	63	80	3-26
SK40-ER16-100 GOST	28	32	100	1-10
SK40-ER25-100 GOST	42	42	100	2-16
SK40-ER32-100 GOST	40	50	100	2-20
SK40-ER40-100 GOST	50	63	100	3-26
SK40-ER16-160T GOST	28	32	160	1-10
SK40-ER25-160 GOST	42	42	160	2-16
SK40-ER32-160 GOST	40	50	160	2-20
SK40-ER40-160 GOST	50	63	160	3-26
SK50-ER16-80 GOST	28	32	80	1-10
SK50-ER25-80 GOST	42	42	80	2-16
SK50-ER32-70 GOST	50	50	70	2-20
SK50-ER40-80 GOST	63	63	80	3-26
SK50-ER16-100 GOST	28	32	100	1-10
SK50-ER25-100 GOST	42	42	100	2-16
SK50-ER32-100 GOST	50	50	100	2-20
SK50-ER40-100 GOST	63	63	100	3-26
SK50-ER16-160 GOST	28	32	160	1-10
SK50-ER25-160 GOST	42	42	160	2-16
SK50-ER32-160 GOST	50	50	160	2-20
SK50-ER40-160 GOST	63	63	160	3-26

T refers to cutter side with taper design
 T 代表刀具端锥柄设计

GOST


Power Milling Chuck
强力铣刀柄

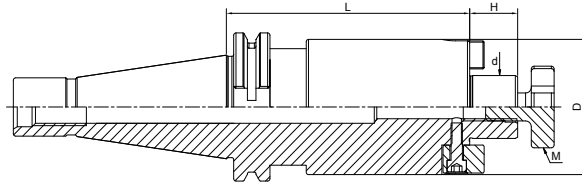
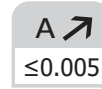
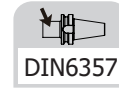


Size	d	D	L	Capacity
SK40-HC20-85 GOST	20	50	85	3-16; 20
SK40-HC25-100 GOST	25	59	100	3-20; 25
SK40-HC32-105 GOST	32	72	105	3-25; 32
SK50-HC20-105 GOST	20	50	105	3-16; 20
SK50-HC25-105 GOST	25	59	105	3-20; 25
SK50-HC32-110 GOST	32	72	110	3-25; 32
SK50-HC42-110 GOST	42	99	110	3-32; 42

GOST



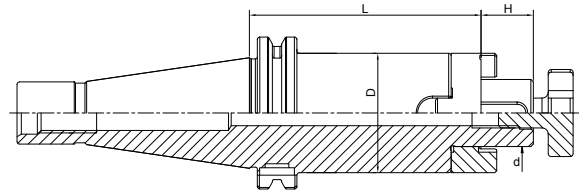
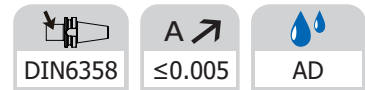
Face Mill Holder 面铣刀柄



Size	d	D	L	H	M
SK40-FMB16-45 GOST	16	38	45	17	M8
SK40-FMB22-45 GOST	22	48	45	19	M10
SK40-FMB27-40 GOST	27	58	40	21	M12
SK40-FMB32-55 GOST	32	78	55	24	M16
SK40-FMB40-55 GOST	40	88	55	27	M20
SK50-FMB16-40 GOST	16	38	40	17	M8
SK50-FMB22-45 GOST	22	48	45	19	M10
SK50-FMB27-45 GOST	27	58	45	21	M12
SK50-FMB32-50 GOST	32	78	50	24	M16
SK50-FMB40-55 GOST	40	88	55	27	M20

GOST


Combi Shell Mill Holder
混合插入式铣刀柄

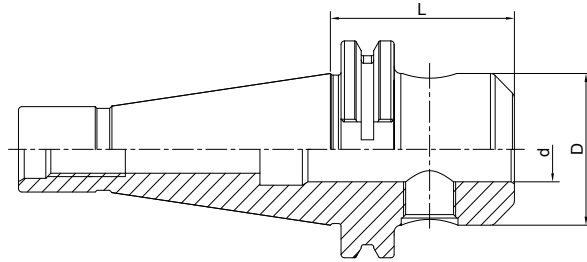
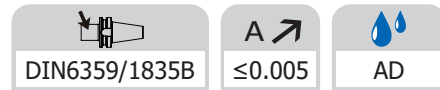


Size	d	D	H	L
SK40-SEMC16-55 GOST	16	32	17	55
SK40-SEMC22-55 GOST	22	40	19	55
SK40-SEMC27-55 GOST	27	48	21	55
SK40-SEMC32-60 GOST	32	58	24	60
SK40-SEMC40-60 GOST	40	70	27	60
SK50-SEMC16-55 GOST	16	32	17	55
SK50-SEMC22-55 GOST	22	40	19	55
SK50-SEMC27-55 GOST	27	48	21	55
SK50-SEMC32-55 GOST	32	58	24	55
SK50-SEMC40-55 GOST	40	70	27	55

GOST



End Mill Holder Weldon 侧固刀柄



Size	d	D	L
SK40-SLA6-50 GOST	6	25	50
SK40-SLA8-50 GOST	8	28	50
SK40-SLA10-50 GOST	10	35	50
SK40-SLA12-50 GOST	12	42	50
SK40-SLA14-50 GOST	14	44	50
SK40-SLA16-63 GOST	16	48	63
SK40-SLA18-63 GOST	18	50	63
SK40-SLA20-63 GOST	20	52	63
SK40-SLA25-100 GOST	25	65	100
SK40-SLA32-100 GOST	32	72	100
SK40-SLA40-120 GOST	40	80	120
SK50-SLA6-63 GOST	6	25	63
SK50-SLA8-63 GOST	8	28	63
SK50-SLA10-63 GOST	10	35	63
SK50-SLA12-63 GOST	12	42	63
SK50-SLA14-63 GOST	14	44	63
SK50-SLA16-63 GOST	16	48	63
SK50-SLA18-63 GOST	18	50	63
SK50-SLA20-63 GOST	20	52	63
SK50-SLA25-80 GOST	25	65	80
SK50-SLA32-100 GOST	32	72	100
SK50-SLA40-100 GOST	40	80	100

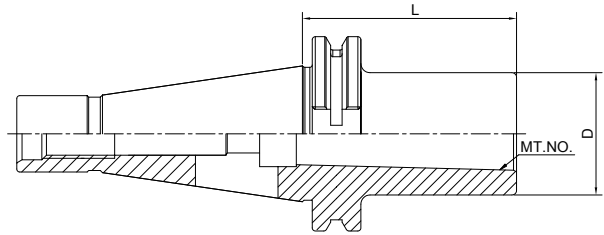


Morse Taper Adapter with Tang
带扁尾莫氏刀柄

DIN6383

A ↗
≤0.005

AD

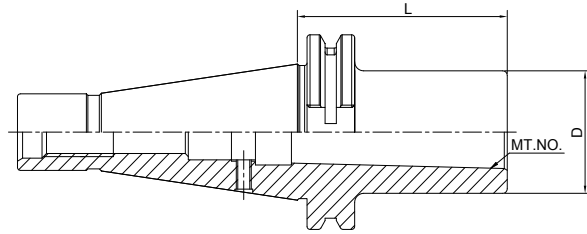
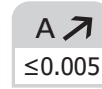
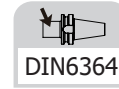


Size	MT. NO.	D	L
SK40-MTA1-50 GOST	1	25	50
SK40-MTA2-50 GOST	2	32	50
SK40-MTA3-70 GOST	3	40	70
SK40-MTA4-95 GOST	4	48	95
SK50-MTA1-45 GOST	1	25	45
SK50-MTA2-60 GOST	2	32	60
SK50-MTA3-65 GOST	3	40	65
SK50-MTA4-95 GOST	4	48	95
SK50-MTA5-105 GOST	5	63	105

GOST



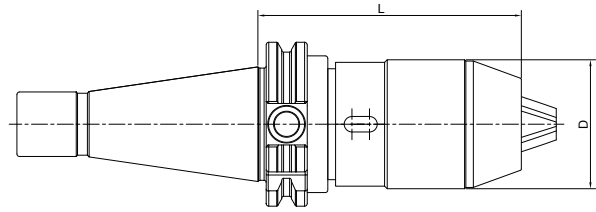
Morse Taper Adapter with Drawbar 带螺纹孔莫氏刀柄



Size	MT. NO.	D	L
SK40-MTB1-50 GOST	1	25	50
SK40-MTB2-50 GOST	2	32	50
SK40-MTB3-70 GOST	3	40	70
SK40-MTB4-95 GOST	4	48	95
SK50-MTB1-45 GOST	1	25	45
SK50-MTB2-60 GOST	2	32	60
SK50-MTB3-65 GOST	3	40	65
SK50-MTB4-95 GOST	4	48	95
SK50-MTB5-105 GOST	5	63	105



APU Drill Chuck Holder
APU 钻夹头刀柄

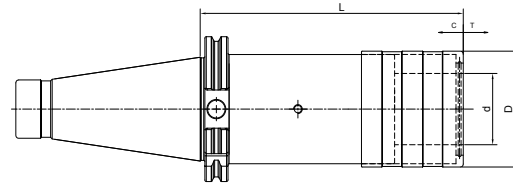


Size	D	L	Capacity
SK40-APU13-100 GOST	48	100	1-13
SK40-APU16-110 GOST	53	110	3-16
SK50-APU13-100 GOST	48	100	1-13
SK50-APU16-100 GOST	53	100	3-16



Quick Change Tapping Chuck with Length Compensation

弹性快换攻丝刀柄



Size	Collet Size	D	d	L	T	C
SK40-TC312-59 GOST	1	36	19	59	7.5	7.5
SK40-TC820-97 GOST	2	54	31	97	12.5	12.5
SK40-TC1433-156 GOST	3	78	48	156	22	22
SK50-TC312-63 GOST	1	38	19	63	7.5	7.5
SK50-TC820-97 GOST	2	54	31	97	12.5	12.5
SK50-TC1433-140 GOST	3	78	48	140	22	22

