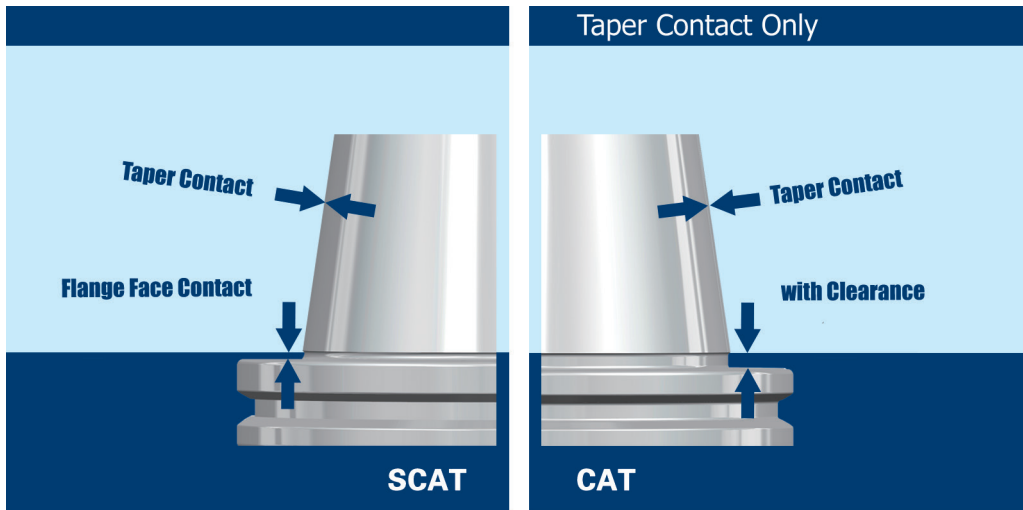


TOOL HOLDERS

SCAT
CAT

SCAT DualDrive (Double Contact) Tool Holders



Taper and Flange Face Dual Contact System Advantages:

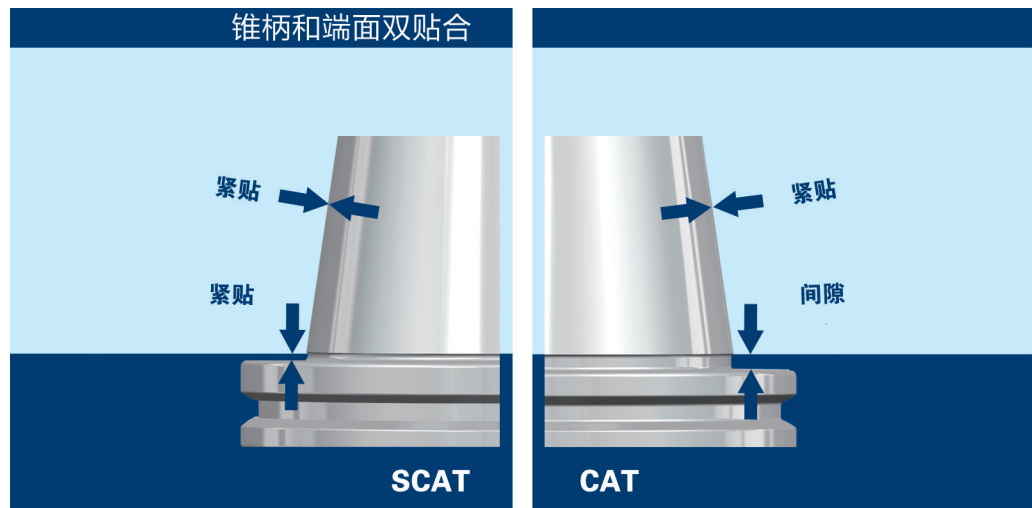
- * Improve tool holder stability when high speed working.
- * Improve workpiece surface finish.
- * Improve working dimension accuracy.
- * Improve ATC repeatability.
- * Improve the roundness when boring operation.
- * Extend cutting tool life.

ORDER SPECIFICATION:

PLEASE CHANGE CAT SIZES TO SCAT ACCORDINGLY.

PLEASE ORDER SCAT SPINDLE MACHINING CENTERS FOR BETTER PERFORMANCE.

SCAT 双接触刀柄



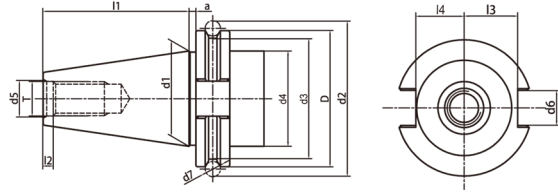
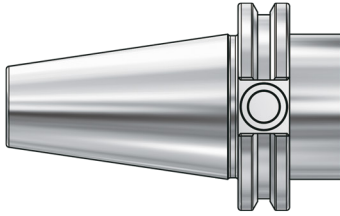
使用 SCAT 双接触刀柄优势：

- * 高速加工时提高刀柄稳定性；
- * 提高工件表面光洁度；
- * 提高加工精度；
- * 提高 ATC 的重复精度；
- * 提高镗孔加工圆度；
- * 增加刀具使用寿命。

订购说明：

请把 CAT 刀柄型号里的 CAT 改为 SCAT 即可；
为了更好的使用效果，请订购带 SCAT 主轴的加工中心。

CAT Taper Standard CAT 锥柄标准



Size	D	d1	d2	d3	d4	d5	d6	d7	l1	l2	l3	l4	l5	T
CAT30	1.812	1.25	2.176	1.531	1.25	0.516	0.645	0.2813	1.875	0.188	0.735	0.64	0.44	1/2-13
CAT40	2.500	1.75	2.863	2.219	1.75	0.641	0.645	0.2813	2.687	0.188	0.985	0.89	0.44	5/8-11
CAT50	3.875	2.75	4.238	3.594	2.75	1.020	1.020	0.2813	4.000	0.250	1.485	1.39	0.44	1-8

Taper standard: ANSI B5.50

Material: Alloyed case hardened steel

Surface Treatment: Blackening and Bright

Taper tolerance: <AT3

Hardness: HRC 58-62

Carbon depth: 0.8±0.2mm

Surface Roughness: Ra<0.005mm

Balancing: G6.3/15000; G2.5/25000

Cooling: AD; AD/B can be made by request.

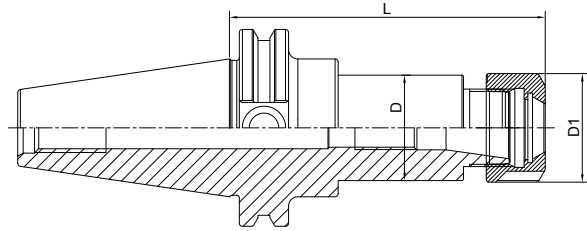
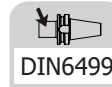
CAT TOOLING SYSTEM CAT 工具系统

ER Collet Chuck	C.06
ER弹簧夹头刀柄	C.06
Power Milling Chuck.....	C.09
强力铣刀柄	C.09
OZ Collet Chuck	C.10
OZ夹头刀柄.....	C.10
TG Collet Chuck.....	C.11
TG 超强力刀柄	C.11
Precision Screw Collet Chuck	C.12
NDC 后拉刀柄	C.12
Face Mill Holder	C.13
面铣刀柄.....	C.13
End Mill Holder.....	C.15
侧固刀柄.....	C.15
Morse Taper Adapter	C.17
带扁尾莫氏刀柄.....	C.17
Tool Holder Adatper Sleeve	C.18
转换刀柄	C.18
Drill Chuck Adapter	C.19
钻接杆	C.19
APU Drill Chuck Holder	C.20
APU钻夹头刀柄.....	C.20
Precision Drill Chuck Holder	C.21
精密钻夹头刀柄	C.21
Quick Change Tapping Chuck	C.22
弹性快换攻丝刀柄	C.22
Screw-in Milling Cutter Holder.....	C.23
SOM 锁牙刀柄	C.23
Boring Bar Blank	C.26
基础柄	C.26
Runout Adjustable Flange Adapter.....	C.27
可调节精度法兰刀柄	C.27
UM Adjustable	C.28
UM调零刀柄	C.28
Test Arbor	C.29
主轴检测棒	C.29
Alignment Tool for ATC Arm	C.30
调整机械手用组合模具	C.30



SCAT
CAT

ER Collet Chuck with UM Nut ER 弹簧夹头刀柄



Size	D	D1	L	Capacity
CAT40-ER16UM-2.5"	44.45	32	2.5"	1-10
CAT40-ER20UM-2.5"	34	35	2.5"	1-13
CAT40-ER25-2.5"	42	42	2.5"	2-16
CAT40-ER32-2.5"	44.45	50	2.5"	2-20
CAT40-ER40-3"	50	63	3"	3-26
CAT40-ER16UM-4"	28	32	4"	1-10
CAT40-ER20UM-4"	34	35	4"	1-13
CAT40-ER25-4"	42	42	4"	2-16
CAT40-ER32-4"	44.45	50	4"	2-20
CAT40-ER40-4"	50	63	4"	3-26
CAT40-ER16UM-6"	28	32	6"	1-10
CAT40-ER20UM-6"	34	35	6"	1-13
CAT40-ER25-6"	42	42	6"	2-16
CAT40-ER32-6"	44.45	50	6"	2-20
CAT40-ER40-6"	50	63	6"	3-26
CAT40-ER16UM-8"	28	32	8"	1-10
CAT40-ER20UM-8"	34	35	8"	1-13
CAT40-ER25-8"	42	42	8"	2-16
CAT40-ER32-8"	44.45	50	8"	2-20
CAT40-ER40-8"	50	63	8"	3-26



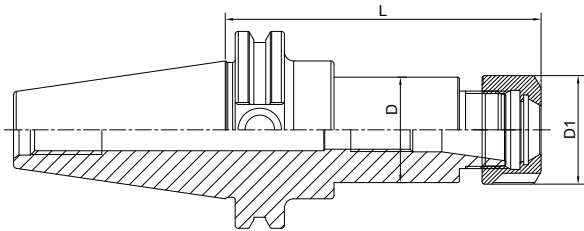
ER Collet Chuck with UM Nut
ER 弹簧夹头刀柄

DIN6499

A ↗
≤0.003

G Value
G2.5
G6.3

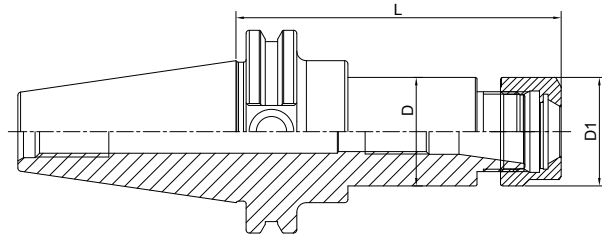
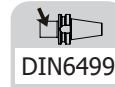
AD AD/B



Size	D	D1	L	Capacity
CAT50-ER16UM-2"	28	32	2"	1-10
CAT50-ER20UM-2"	34	35	2"	1-13
CAT50-ER25-2"	32	42	2"	2-16
CAT50-ER32-2"	44.45	50	2"	2-20
CAT50-ER16UM-4"	28	32	4"	1-10
CAT50-ER20UM-4"	34	35	4"	1-13
CAT50-ER25-4"	42	42	4"	2-16
CAT50-ER32-4"	50	50	4"	2-20
CAT50-ER40-4"	63	63	4"	3-26
CAT50-ER50-4"	78	78	4"	6-34
CAT50-ER16UM-6"	28	32	6"	1-10
CAT50-ER20UM-6"	34	35	6"	1-13
CAT50-ER25-6"	42	42	6"	2-16
CAT50-ER32-6"	50	50	6"	2-20
CAT50-ER40-6"	63	63	6"	3-26
CAT50-ER16UM-8"	28	32	8"	1-10
CAT50-ER20UM-8"	34	35	8"	1-13
CAT50-ER25-8"	42	42	8"	2-16
CAT50-ER32-8"	50	50	8"	2-20
CAT50-ER40-8"	63	63	8"	3-26

ER Collet Chuck with Hex Nut

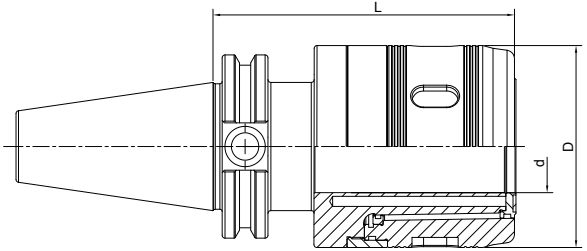
ER 弹簧夹头刀柄



Size	D	D1	L	Capacity
CAT40-ER11A-2.5"	19	19	2.5"	1-7
CAT40-ER16A-2.5	44.45	28	2.5"	1-10
CAT40-ER20A-2.5	34	34	2.5"	1-13
CAT40-ER11A-4"	19	19	4"	1-7
CAT40-ER16A-4"	28	28	4"	1-10
CAT40-ER20A-4"	34	34	4"	1-13
CAT40-ER11A-6"	19	19	6"	1-7
CAT40-ER16A-6"	28	28	6"	1-10
CAT40-ER20A-6"	34	34	6"	1-13
CAT40-ER16A-8"	28	28	8"	1-10
CAT40-ER20A-8"	34	34	8"	1-13
CAT50-ER16A-2"	28	28	2"	1-10
CAT50-ER20A-2"	34	34	2"	1-13
CAT50-ER16A-4"	28	28	4"	1-10
CAT50-ER20A-4"	34	34	4"	1-13
CAT50-ER16A-6"	28	28	6"	1-10
CAT50-ER20A-6"	34	34	6"	1-13
CAT50-ER16A-8"	28	28	8"	1-10
CAT50-ER20A-8"	34	34	8"	1-13

Power Milling Chuck
强力铣刀柄

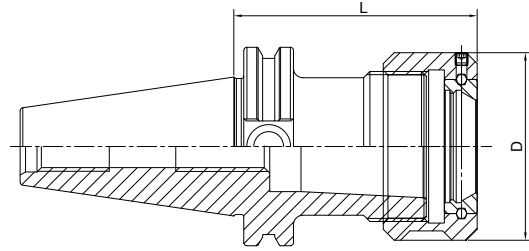
A ↗ ≤0.008	G Value G6.3	AD
---------------	-----------------	----



Size	d	D	L	Collet
CAT40-HC3/4"-4"	3/4"	50	5"	C3/4"
CAT40-HC1"-4"	1"	59	5"	C1"
CAT40-HC1-1/4"-4"	1.25"	70	5"	C1-1/4"
CAT50-HC3/4"-4'	3/4"	50	5"	C3/4"
CAT50-HC1"-4"	1"	59	5"	C1"
CAT50-HC1-1/4"-4"	1.25'	70	5"	C1-1/4"

OZ Collet Chuck OZ 夹头刀柄

DIN6391	A \nearrow ≤ 0.005	G Value G6.3	AD AD/B
---------	------------------------------	-----------------	---------

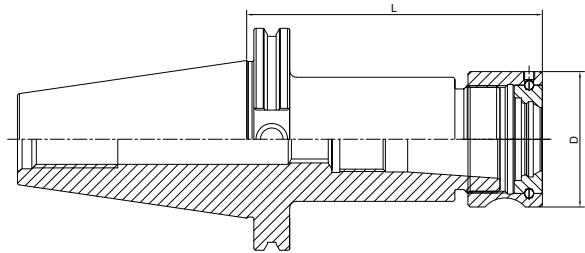


Size	D	L	Capacity
CAT40-OZ25-2.25"	2.25"	2.36"	2 – 25
CAT40-OZ32-2.25"	2.25"	2.83"	3 – 32
CAT40-OZ25-4.00"	4.00"	2.36"	2 – 25
CAT40-OZ32-4.00"	4.00"	2.83"	3 – 32
CAT50-OZ25-2.25"	2.25"	2.36"	2 – 25
CAT50-OZ32-2.25"	2.25"	2.83"	3 – 32
CAT50-OZ25-4.00"	4.00"	2.36"	2 – 25
CAT50-OZ32-4.00"	4.00"	2.83"	3 – 32



TG Collet Chuck
TG 超強力刀柄

A ↗ ≤0.005	G Value G6.3	AD
---------------	-----------------	----

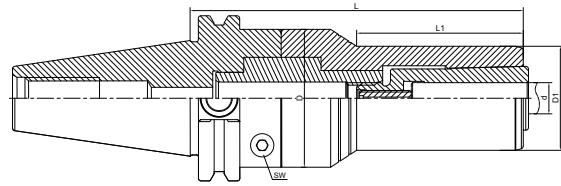


Size	D	L	Collet	Capacity
CAT40-TG75-3"	1.968"	3"	TG 75	0.094 - .75"
CAT40-TG75-5"	1.968"	5"	TG 75	0.094 - .75"
CAT40-TG100-3"	2.362"	3"	TG 100	0.094 - 1.0"
CAT40-TG100-5.5"	2.362"	5.5"	TG 100	0.094 - 1.0"
CAT50-TG75-3.5"	1.968"	3.5"	TG 75	0.094 - .75"
CAT50-TG75-5.5"	1.968"	5.5"	TG 75	0.094 - .75"
CAT50-TG100-3.5"	2.362"	3.5"	TG 100	0.094 - 1.0"
CAT50-TG100-5.5"	2.362"	5.5"	TG 100	0.094 - 1.0"
CAT50-TG150-3.50		3.5"	TG 150	
CAT50-TG150-6.00		6"	TG 150	



Precision Screw Collet Chuck NDC 后拉刀柄

A ↗ ≤0.003	G Value G6.3	AD
---------------	-----------------	----

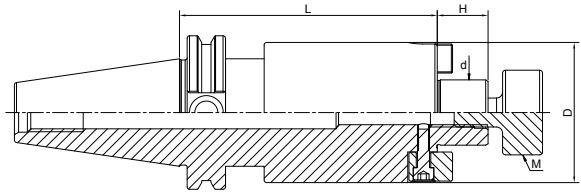


Size	L	L1	D	D1	Capacity
CAT40-NDC20-83	83	20	50	40	3-20
CAT40-NDC20-112	112	45	50	40	3-20
CAT50-NDC20-83	83	18	63	40	3-20
CAT50-NDC20-112	112	45	63	40	3-20
CAT50-NDC25-130	130	-	70	52.5	16-32

**SCAT
CAT**


Face Mill Holder Inch
英制面铣刀柄

A ↗ ≤0.005	G Value G2.5 G6.3	AD AD/B
---------------	----------------------	---------

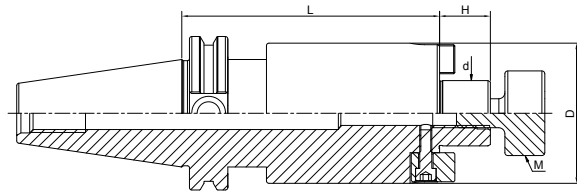


Size	d	D	L	H	M
CAT40-FMA1/2"-1.75"	1/2"	36.576	1.75"	13.97	1/4-28
CAT40-FMA3/4"-1.75"	3/4"	42.926	1.75"	17.45	3/8-24
CAT40-FMA1"-2"	1"	55.626	2"	17.45	1/2-20
CAT40-FMA1-1/4"-2"	1-1/4"	69.85	2"	17.45	5/8-18
CAT40-FMA1-1/2"-2"	1-1/2"	78	2"	23.83	3/4-16
CAT40-FMA1/2"-4"	1/2"	36.576	4"	13.97	1/4-28
CAT40-FMA3/4"-4"	3/4"	42.926	4"	17.45	3/8-24
CAT40-FMA1"-4"	1"	55.626	4"	17.45	1/2-20
CAT40-FMA1-1/4"-4"	1-1/4"	69.85	4"	17.45	5/8-18
CAT40-FMA1-1/2"-4"	1-1/2"	78	4"	23.83	3/4-16
CAT40-FMA3/4"-6"	3/4"	42.926	6"	17.45	3/8-24
CAT40-FMA1"-6"	1"	55.626	6"	17.45	1/2-20
CAT40-FMA3/4"-8"	3/4"	42.926	8"	17.45	3/8-24
CAT40-FMA1"-8"	1"	55.626	8"	17.45	1/2-20



Face Mill Holder Inch 英制面铣刀柄

A ↗ ≤0.005	G Value G2.5 G6.3	AD AD/B
---------------	----------------------	---------



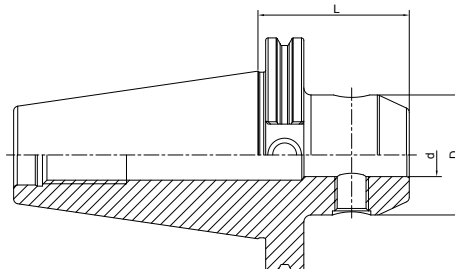
Size	d	D	L	H	M
CAT50-FMA1/2"-1.38"	1/2"	36.576	1.38"	13.97	1/4-28
CAT50-FMA3/4"-2"	3/4"	42.926	2"	17.45	3/8-24
CAT50-FMA1"-2"	1"	55.626	2"	17.45	1/2-20
CAT50-FMA1-1/4"-2"	1-1/4"	69.85	2"	17.45	5/8-18
CAT50-FMA1-1/2"-2"	1-1/2"	78	2"	23.83	3/4-16
CAT50-FMA2"-2"	2"	98	2"	23.83	1-14
CAT50-FMA3/4"-4"	3/4"	42.926	4"	17.45	3/8-24
CAT50-FMA1"-4"	1"	55.626	4"	17.45	1/2-20
CAT50-FMA1-1/4"-4"	1-1/4"	69.85	4"	17.45	5/8-18
CAT50-FMA1-1/2"-4"	1-1/2"	78	4"	23.83	3/4-16
CAT50-FMA2"-4"	2"	98	4"	23.83	1-14
CAT50-FMA3/4"-6"	3/4"	42.926	6"	17.45	3/8-24
CAT50-FMA1"-6"	1"	55.626	6"	17.45	1/2-20
CAT50-FMA1-1/4"-6"	1-1/4"	69.85	6"	17.45	5/8-18
CAT50-FMA1-1/2"-6"	1-1/2"	78	6"	23.83	3/4-16
CAT50-FMA3/4"-8"	3/4"	42.926	8"	17.45	3/8-24
CAT50-FMA1"-8"	1"	55.626	8"	17.45	1/2-20
CAT50-FMA1-1/4"-8"	1-1/4"	69.85	8"	17.45	5/8-18
CAT50-FMA1-1/2"-8"	1-1/2"	78	8"	23.83	3/4-16



End Mill Holder Weldon
侧固刀柄



DIN6359/1835B	A ↗ ≤0.005	G Value G6.3 G2.5	AD AD/B
---------------	------------	-------------------	---------

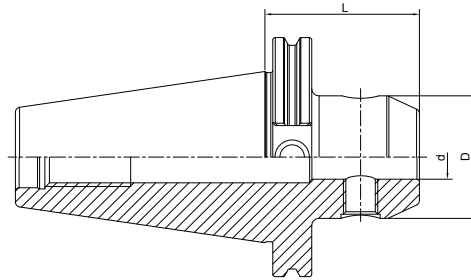


Size	d	D	L
CAT40-SLA1/4"-1.38	1/4"	19.81	1.38"
CAT40-SLA5/16"-1.38"	5/16"	22.225	1.38"
CAT40-SLA3/8"-1.38"	3/8"	25.4	1.38"
CAT40-SLA1/2"-1.75"	1/2"	31.75	1.75"
CAT40-SLA5/8"-1.75"	5/8"	38.1	1.75"
CAT40-SLA3/4"-1.75"	3/4"	44.45	1.75"
CAT40-SLA1"-1.75"	1"	50.8	1.75"
CAT40-SLA1-1/4"-1.75"	1-1/4"	63.5	1.75"
CAT40-SLA1/4"-2"	1/4"	19.81	2"
CAT40-SLA3/8"-2.5"	3/8"	25.4	2.5"
CAT40-SLA7/16"-2.5"	7/16"	28.575	2.5"
CAT40-SLA5/8"-3"	5/8"	38.1	3"
CAT40-SLA1/2"-3"	1/2"	31.75	3"
CAT40-SLA3/4"-3"	3/4"	44.45	3"
CAT40-SLA7/8"-3.5"	7/8"	47.625	3.5"
CAT40-SLA1"-2"	1"	50.8	2"
CAT40-SLA1-1/4"-2"	1-1/4"	63.5	2"
CAT40-SLA1-1/2"-4.5"	1-1/2"	63.5	4.5"
CAT40-SLA1/4"-4"	1/4"	19.81	4"
CAT40-SLA5/16"-4"	5/16"	22.225	4"
CAT40-SLA3/8"-4"	3/8"	25.4	4"
CAT40-SLA1/2"-4"	1/2"	31.75	4"
CAT40-SLA1"-4"	1"	50.8	4"
CAT40-SLA1-1/4"-4"	1-1/4"	63.5	4"
CAT40-SLA1/4"-6"	1/4"	19.81	6"
CAT40-SLA1/2"-6"	1/2"	31.75	6"
CAT40-SLA5/8"-5"	5/8"	38.1	5"
CAT40-SLA3/4"-5.5"	3/4"	44.45	5.5"
CAT40-SLA1"-6"	1"	50.8	6"
CAT40-SLA1-1/4"-6"	1-1/4"	63.5	6"
CAT40-SLA1-1/2"-6.62"	1-1/2"	63.5	6.62"



End Mill Holder Weldon 侧固刀柄

DIN6359/1835B	A ≤ 0.005	G Value G6.3 G2.5	AD AD/B
---------------	----------------	----------------------	---------

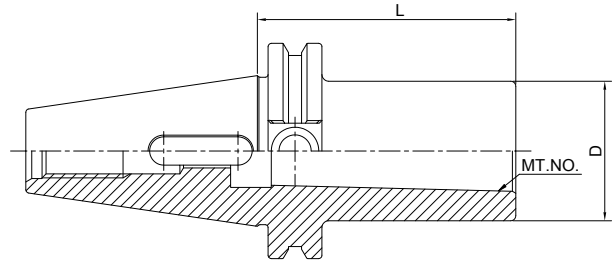


Size	d	D	L
CAT50-SLA1/4"-1.38"	1/4"	19.81	1.38"
CAT50-SLA3/8"-1.38"	3/8"	25.4	1.38"
CAT50-SLA7/16"-1.75"	7/16"	28.575	1.75"
CAT50-SLA1/2"-1.75"	1/2"	31.75	1.75"
CAT50-SLA5/8"-1.75"	5/8"	38.1	1.75"
CAT50-SLA3/4"-1.75"	3/4"	44.45	1.75"
CAT50-SLA1"-2"	1"	50.8	2"
CAT50-SLA1-1/4"-2"	1-1/4"	63.5	2"
CAT50-SLA1-1/2"- 2.25"	1-1/2"	63.5	2.25"
CAT50-SLA5/16"-2.5"	5/16"	22.225	2.5"
CAT50-SLA7/16"-2.5"	7/16"	28.575	2.5"
CAT50-SLA1/2"-2"	1/2"	31.75	2"
CAT50-SLA5/8"-2"	5/8"	38.1	2"
CAT50-SLA3/4"-2"	3/4"	44.45	2"
CAT50-SLA7/8"-3.75"	7/8"	47.625	3.75"
CAT50-SLA1-1/2"-4.5"	1-1/2"	63.5	4.5"
CAT50-SLA2"-5.37"	2"	95.25	5.37"
CAT50-SLA1/4"-4"	1/4"	19.81	4"
CAT50-SLA5/16"-4"	5/16"	22.225	4"
CAT50-SLA3/8"-4"	3/8"	25.4	4"
CAT50-SLA1/2"-4"	1/2"	31.75	4"
CAT50-SLA5/8"-4"	5/8"	38.1	4"
CAT50-SLA3/4"-4"	3/4"	44.45	4"
CAT50-SLA1"-4"	1"	50.8	4"
CAT50-SLA1-1/4"-4"	1-1/4"	63.5	4"
CAT50-SLA1/4"-6"	1/4"	19.81	6"
CAT50-SLA3/8"-6"	3/8"	25.4	6"
CAT50-SLA1/2"-6"	1/2"	31.75	6"
CAT50-SLA5/8"-6"	5/8"	38.1	6"
CAT50-SLA3/4"-6"	3/4"	44.45	6"
CAT50-SLA1"-6"	1"	50.8	6"
CAT50-SLA1-1/4"-6"	1-1/4"	63.5	6"

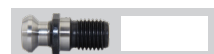


Morse Taper Adapter with Tang
带扁尾莫氏刀柄


 DIN6383	 A ≤ 0.005	 G Value G6.3	 AD
--------------------------------------------------------------------------------------------	----------------------------------------------------------------------------------------------------	--------------------------------------------------------------------------------------------------	----------------------------------------------------------------------------------------

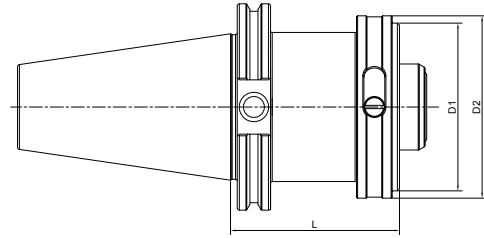


Size	MT. NO.	D	L
CAT40-MTA1-1.75"	1	25.40	1.75"
CAT40-MTA2-2"	2	31.75	2"
CAT40-MTA3-3"	3	41.45	3"
CAT40-MTA4-4"	4	50.80	4"
CAT50-MTA2-2"	2	31.75	2"
CAT50-MTA3-2"	3	41.45	2"
CAT50-MTA4-3"	4	50.80	3"
CAT50-MTA5-4"	5	69.85	4"



Tool Holder Adatper Sleeve 转换刀柄

A ↗ ≤0.005	G Value G6.3	 A
---------------	-----------------	------------------------------------------------------------------------------------------



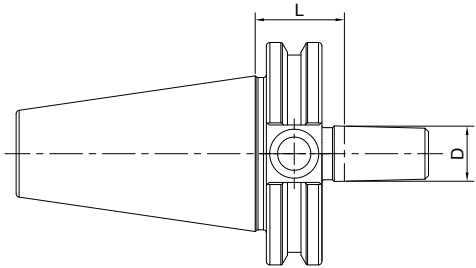
Size	D1	D2	L
CAT30-HSK32C-45	32	37	45
CAT30-HSK40C-60	40	45	60
CAT40-HSK32C-50	32	37	50
CAT40-HSK40C-50	40	45	50
CAT40-HSK50C-60	50	55	60
CAT40-HSK63C-75	63	70	75
CAT50-HSK32C-50	32	37	50
CAT50-HSK40C-50	40	45	50
CAT50-HSK50C-55	50	55	55
CAT50-HSK63C-55	63	70	55
CAT50-HSK80C-80	80	87	80
CAT50-HSK100C-95	100	110	95



Drill Chuck Adapter
钻接杆

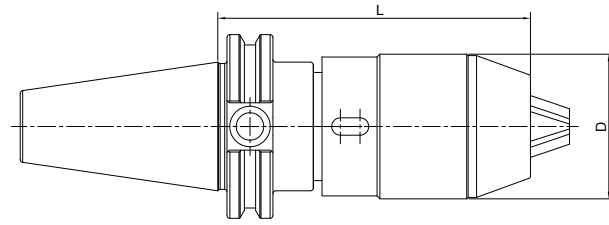


 DIN238	 A \nearrow ≤ 0.005	 G Value G6.3	  A
-------------------------------------------------------------------------------------------	------------------------------------------------------------------------------------------------------------------	-----------------------------------------------------------------------------------------------------	------------------------------------------------------------------------------------------------------------------------------------------------------------------------------



Size	D	L
CAT40-JT2-1.5"	14.199	1.5"
CAT40-JT3-1.5"	20.599	1.5"
CAT40-JT4-1.5"	28.55	1.5"
CAT40-JT6-1.5"	17.17	1.5"
CAT40-JT33-1.5"	15.85	1.5"
CAT50-JT2-1.5"	14.199	1.5"
CAT50-JT3-1.5"	20.599	1.5"
CAT50-JT4-1.5"	28.55	1.5"
CAT50-JT6-1.5"	17.17	1.5"
CAT50-JT33-1.5"	15.85	1.5"

APU Drill Chuck Holder APU 钻夹头刀柄

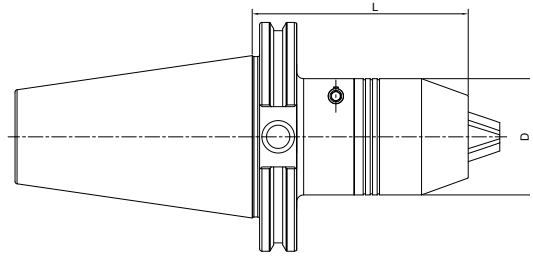


Size	D	L		Capacity
CAT40-APU08-85	36	85	90	1-8
CAT40-APU13-100	48	100	110	1-13
CAT40-APU16-110	53	110	120.6	3-16
CAT50-APU13-100	48	100	110	1-13
CAT50-APU16-105	53	105	120.6	3-16

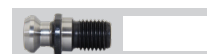


Precision Drill Chuck Holder
精密钻夹头刀柄

A ↗ ≤0.03	G Value G6.3	AD
--------------	-----------------	----

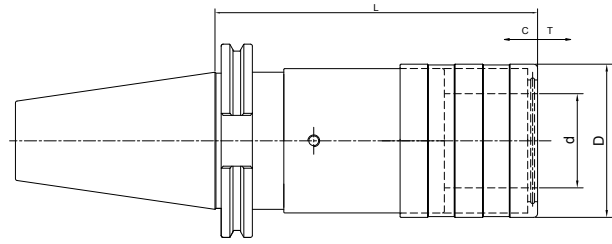


Size	D	L	Capacity
CAT40-CPU13-90	50	90	1-13
CAT40-CPU16-90	50	90	1-16
CAT50-CPU13-100	50	100	1-13
CAT50-CPU16-100	50	100	1-16



Quick Change Tapping Chuck with Length Compensation

弹性快换攻丝刀柄



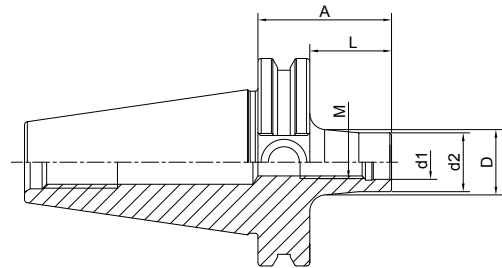
Size	Collet Size	D	d	L	T	C
CAT40-TC312-65	1	36	19	65	7.5	7.5
CAT40-TC820-93	2	54	31	93	12.5	12.5
CAT40-TC1433-156	3	78	48	156	22	22
CAT50-TC312-100	1	36	19	100	7.5	7.5
CAT50-TC820-100	2	54	31	100	12.5	12.5
CAT50-TC1433-142	3	78	48	142	22	22



Screw-in Milling Cutter Holder
锁牙刀柄，锥柄型



A ↗ ≤0.005	G Value G6.3	AD AD/B
---------------	-----------------	---------



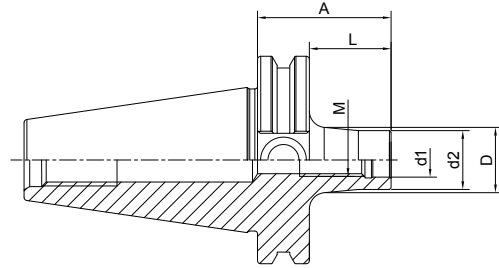
Size	M	d1	d2	A	L	D
CAT40-SOM08-44 L=25	8	8.5	14.5	44	25	15
CAT40-SOM08-69 L=50	8	8.5	14.5	69	50	23
CAT40-SOM08-94 L=75	8	8.5	14.5	94	75	23
CAT40-SOM08-119 L=100	8	8.5	14.5	119	100	25
CAT40-SOM10-24 L=5	10	10.5	18	24	5	18
CAT40-SOM10-44 L=25	10	10.5	18	44	25	20
CAT40-SOM10-69 L=50	10	10.5	18	69	50	23
CAT40-SOM10-94 L=75	10	10.5	18	94	75	28
CAT40-SOM10-119 L=100	10	10.5	18	119	100	32
CAT40-SOM10-169 L=150	10	10.5	18	169	150	36.5
CAT40-SOM12-24 L=5	12	12.5	21	24	5	21
CAT40-SOM12-44 L=25	12	12.5	21	44	25	24
CAT40-SOM12-69 L=50	12	12.5	21	69	50	24
CAT40-SOM12-94 L=75	12	12.5	21	94	75	31
CAT40-SOM12-119 L=100	12	12.5	21	119	100	33
CAT40-SOM12-144 L=125	12	12.5	21	144	125	36
CAT40-SOM12-169 L=150	12	12.5	21	169	150	40
CAT40-SOM16-24 L=5	16	17	29	24	5	29
CAT40-SOM16-44 L=25	16	17	29	44	25	29
CAT40-SOM16-69 L=50	16	17	29	69	50	34
CAT40-SOM16-94 L=75	16	17	29	94	75	34
CAT40-SOM16-119 L=100	16	17	29	119	100	36
CAT40-SOM16-144 L=125	16	17	29	144	125	40
CAT40-SOM16-169 L=150	16	17	29	169	150	42.5



Screw-in Milling Cutter Holder

锁牙刀柄, 锥柄型

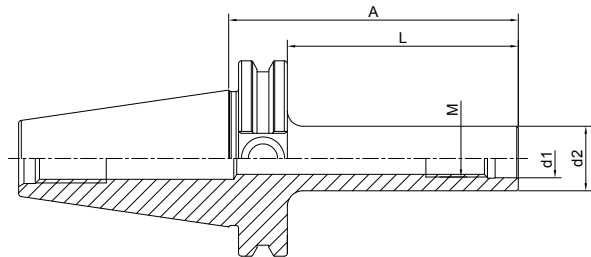
A ↗ ≤0.005	G Value G6.3	AD AD/B
---------------	-----------------	---------



Size	M	d1	d2	A	L	D
CAT50-SOM08-69 L=50	8	8.5	14.5	69	50	23
CAT50-SOM08-119 L=100	8	8.5	14.5	119	100	25
CAT50-SOM08-169 L=150	8	8.5	14.5	169	150	30
CAT50-SOM10-69 L=50	10	10.5	18	69	50	23
CAT50-SOM10-119 L=100	10	10.5	18	119	100	32
CAT50-SOM10-169 L=150	10	10.5	18	169	150	36.5
CAT50-SOM12-69 L=50	12	12.5	21	69	50	24
CAT50-SOM12-119 L=100	12	12.5	21	119	100	33
CAT50-SOM12-169 L=150	12	12.5	21	169	150	40
CAT50-SOM16-69 L=50	16	17	29	69	50	34
CAT50-SOM16-119 L=100	16	17	29	119	100	36
CAT50-SOM16-169 L=150	16	17	29	169	150	42.5

Screw-in Milling Cutter Holder
锁牙刀柄，直柄型

A ↗ ≤0.005	G Value G6.3	AD AD/B
---------------	-----------------	---------

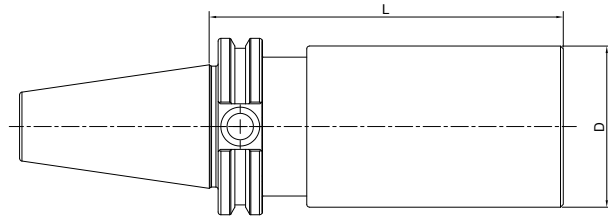


Size	M	d1	d2	A	L
CAT40-M10-119 L=100	10	10.5	18	119	100
CAT40-M10-169 L=150	10	10.5	18	169	150
CAT40-M12-119 L=100	12	12.5	21	119	100
CAT40-M12-144 L=125	12	12.5	21	144	125
CAT40-M12-169 L=150	12	12.5	21	169	150
CAT40-M16-119 L=100	16	17	29	119	100
CAT40-M16-144 L=125	16	17	29	144	125
CAT40-M16-169 L=150	16	17	29	169	150
CAT50-M10-119 L=100	10	10.5	18	119	100
CAT50-M10-169 L=150	10	10.5	18	169	150
CAT50-M12-119 L=100	12	12.5	21	119	100
CAT50-M12-169 L=150	12	12.5	21	169	150
CAT50-M16-119 L=100	16	17	29	119	100
CAT50-M16-169 L=150	16	17	29	169	150



Boring Bar Blank

基础柄



Size	D	L
CAT40-2.5"-6"	2.5"	6"
CAT40-2.5"-10"	2.5"	10"
CAT40-4"-6"	4"	6"
CAT40-4"-10"	4"	10"
CAT50-2.5"-6"	2.5"	6"
CAT50-2.5"-10"	2.5"	10"
CAT50-4"-6"	4"	6"
CAT50-4"-10"	4"	10"
CAT50-6"-10"	6"	10"

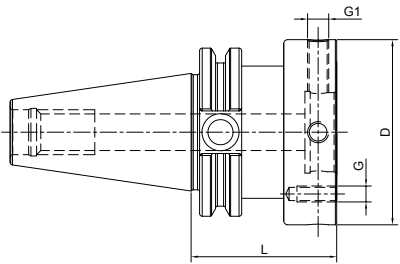
Other sizes can be made by request.



Runout Adjustable Flange Adapter
可调节精度法兰刀柄



A ↗ ≤0.002	G Value G6.3 G2.5	AD
---------------	----------------------	----



CAT	CAT	D	L	G	G1
CAT40-MOD060-050	40	60	50	M5	M8x1
CAT40-MOD070-050	40	70	50	M6	M8x1
CAT40-MOD080-055	40	80	55	M6	M8x1
CAT40-MOD100-060	40	100	60	M8	M10x1
CAT50-MOD060-050	50	60	50	M5	M8x1
CAT50-MOD070-050	50	70	50	M6	M8x1
CAT50-MOD080-050	50	80	50	M6	M8x1
CAT50-MOD100-060	50	100	60	M8	M10x1
CAT50-MOD117-060	50	117	60	M8	M10x1
CAT50-MOD140-060	50	140	60	M10	M10x1



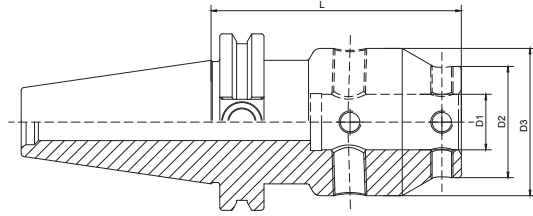
UM Adjustable Tool Holder

UM 调零刀柄

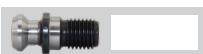
A ↗
≤0.003

G Value
G6.3 G2.5

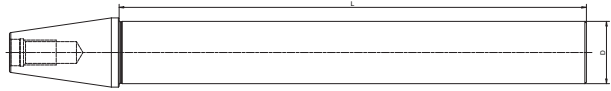
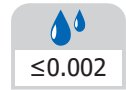
AD AD/B



Size	D1	D2	D3	L
CAT40-UM12-65	12	28	44.5	65
CAT40-UM16-80	16	32	48	80
CAT40-UM20-90	20	40	53	90
CAT40-UM25-100	25	48	63	100
CAT40-UM32-105	32	52	63	105
CAT50-UM12-80	12	28	44.5	80
CAT50-UM16-80	16	32	48	80
CAT50-UM20-90	20	40	53	90
CAT50-UM25-100	25	48	63	100
CAT50-UM32-105	32	52	63	105



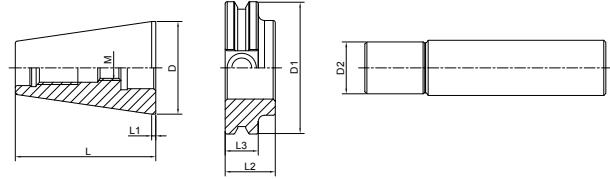
Test Arbor
主轴检测棒



Size	D	L
CAT30-32-250	32	250
CAT40-40-300	40	300
CAT50-50-300	50	300

Other sizes can be made by request.

Alignment Tool for ATC Arm 调整机械手用组合模具



Size	D	D1	D2	L	L1	L2	L3	M
CAT30-ATC-18D	31.75	46	18	50.8	3.175	20	15.875	M12
CAT40-ATC-20D	44.45	63.5	20	71.43	3.175	25	15.875	M12
CAT50-ATC-28D	69.85	98.43	28	104.78	3.175	35	15.875	M16

